

WAAS CH <b>86233</b> <b>W26A</b>	APP CRS <b>264°</b>	Rwy Idg TDZE <b>176</b> Apt Elev <b>176</b>	<b>5004</b>
--	------------------------	---	-------------

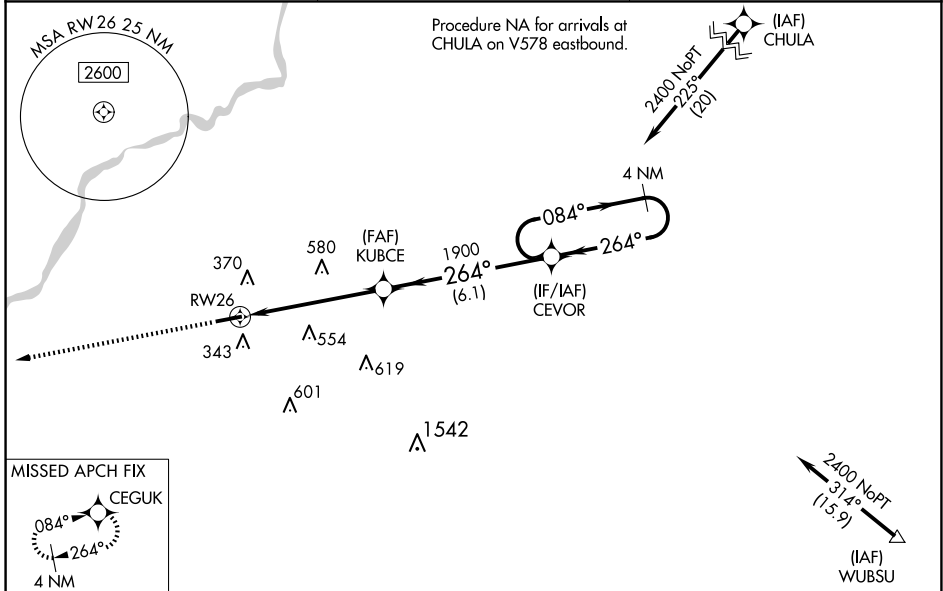
# RNAV (GPS) RWY 26

CAMILLA-MITCHELL COUNTY (CXU)

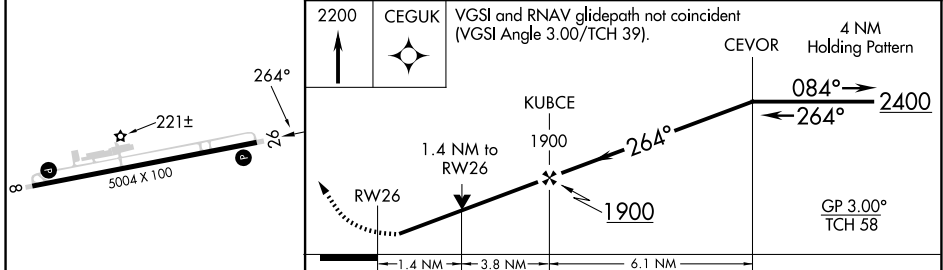
**NA** Baro-VNAV NA when using Albany altimeter setting. For uncompensated Baro-VNAV systems, LNAV/VNAV NA below -15°C (5°F) or above 54°C (130°F). DME/DME RNP-0.3 NA. When local altimeter setting not received, use Albany altimeter setting and increase LPV DA to 553 feet; increase LNAV/VNAV DA to 601 feet; increase all MDAs 60 feet and LNAV Cats C/D and Circling Cat D visibility ¼ SM. Rwy 26 helicopter visibility reduction below ¾ SM NA.

**MISSED APPROACH:**  
Climb to 2200 direct CEGUK and hold.

<b>AWOS-3T</b> <b>118.675</b>	<b>JACKSONVILLE CENTER</b> <b>125.75 363.075</b>	<b>UNICOM</b> <b>122.8 (CTAF) 1</b>
----------------------------------	---	--



ELEV 176	TDZE 176
----------	----------



CATEGORY	A	B	C	D
LPV DA		505-1	329 (400-1)	
LNAV/VNAV DA		553-1¼	377 (400-1¼)	
LNAV MDA	660-1	484 (500-1)	660-1¾ 484 (500-1¾)	
CIRCLING	720-1 544 (600-1)	760-1 584 (600-1)	920-2¼ 744 (800-2¼)	940-2½ 764 (800-2½)

REIL Rwy 8 and 26 1  
MIRL Rwy 8-26 1

SE-4, 14 MAY 2026 to 11 JUN 2026

SE-4, 14 MAY 2026 to 11 JUN 2026