

WAAS CH 40033 W08A	APP CRS 084°	Rwy Idg TDZE 170 Apt Elev 176	5004
--	------------------------	---	-------------

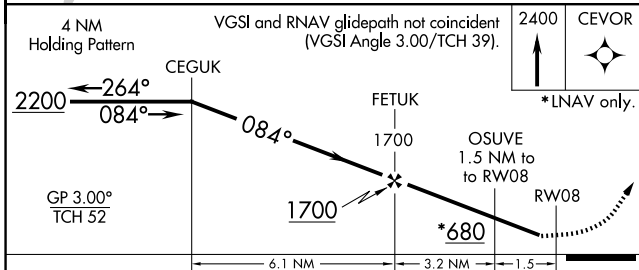
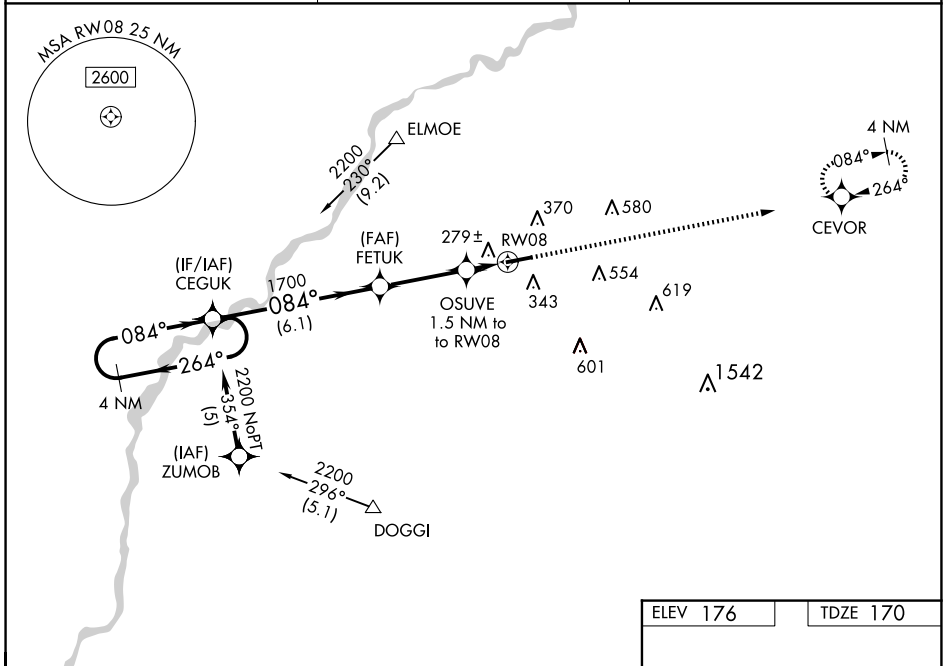
RNAV (GPS) RWY 8

CAMILLA-MITCHELL COUNTY (CXU)

⚠ Baro-VNAV NA when using Albany altimeter setting. For uncompensated Baro-VNAV systems, LNAV/VNAV NA below -1.5°C (5°F) or above 54°C (130°F). DME/DME RNP-0.3 NA. When local altimeter setting not received, use Albany altimeter setting and increase LPV DA to 513 feet; increase LNAV/VNAV DA to 623 feet; increase all MDAs 60 feet and LNAV Cats C/D and Circling Cat D visibility ¼ SM.

MISSED APPROACH:
Climb to 2400 direct CEVOR and hold.

AWOS-3T 118.675	JACKSONVILLE CENTER 125.75 363.075	UNICOM 122.8 (CTAF) 📻
---------------------------	--	--



ELEV 176	TDZE 170
----------	----------

REIL Rwy 8 and 26 **📻**
MIRL Rwy 8-26 **📻**

CATEGORY	A	B	C	D
LPV DA		465-1	295 (300-1)	
LNAV/VNAV DA		575-1⅜	405 (400-1⅜)	
LNAV MDA		540-1	370 (400-1)	
CIRCLING	720-1 544 (600-1)	760-1 584 (600-1)	920-2¼ 744 (800-2¼)	940-2½ 764 (800-2½)

SE-4, 14 MAY 2026 to 11 JUN 2026

SE-4, 14 MAY 2026 to 11 JUN 2026