

VORTAC RMG 115.4 Chan 101	APP CRS 108°	Rwy Ldg TDZE Apt Elev 5233 1028 1040
--	------------------------	--

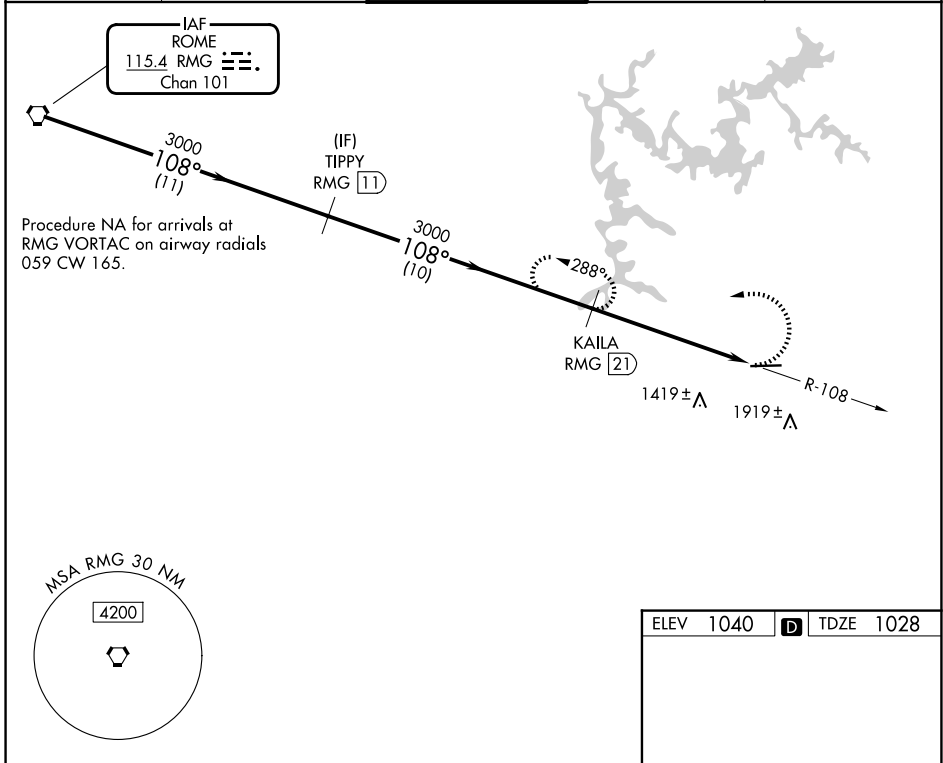
VOR/DME RWY 9

COBB COUNTY INTL/MCCOLLUM FLD (RYY)

⚠ Rwy 9 helicopter visibility reduction below 1 SM NA. When local altimeter setting not received, use ATL altimeter setting and increase all MDAs 60 feet and S-9 Cat A/C/D visibilities ¼ mile.

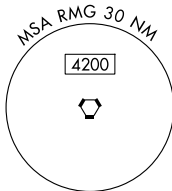
MISSED APPROACH: Climbing left turn to 3000 via heading 240° and RMG R-108 to KAILA/21 DME and hold.

ATIS 128.125	ATLANTA APP CON 121.0 268.7	MCCOLLUM TOWER ★ 125.9 (CTAF) 0	GND CON 119.0	UNICOM 122.7
------------------------	---------------------------------------	---	-------------------------	------------------------



SE-4, 14 MAY 2026 to 11 JUN 2026

SE-4, 14 MAY 2026 to 11 JUN 2026



ELEV 1040	D TDZE 1028
-----------	--------------------

