

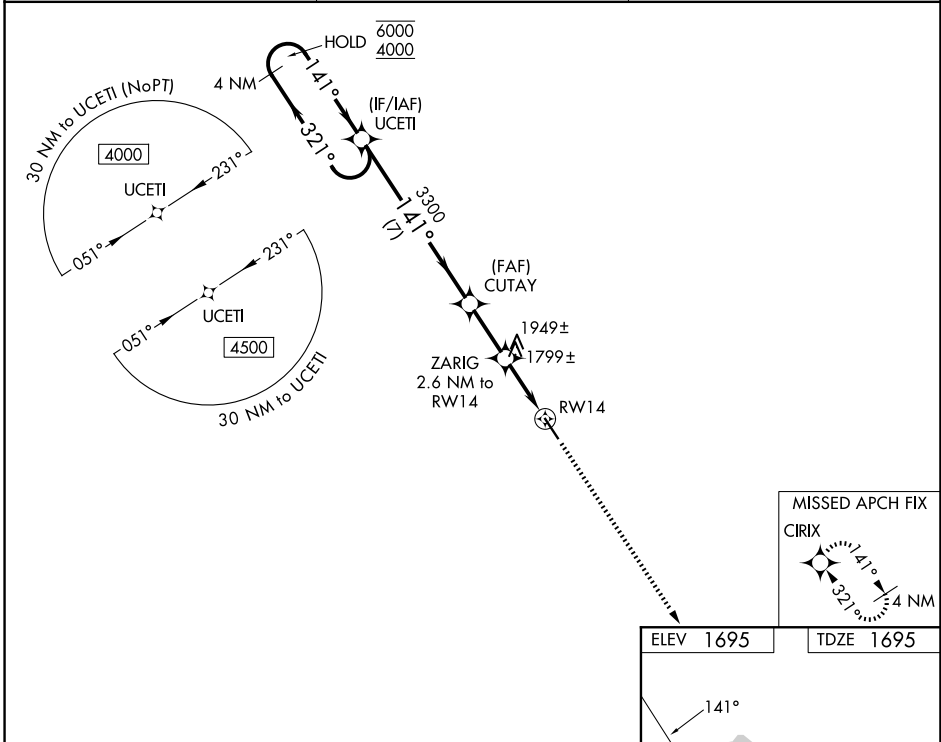
WAAS CH 78030 W14A	APP CRS 141°	Rwy Ldg TDZE 1695 Apt Elev 1695	5002
--	------------------------	---	-------------

RNAV (GPS) RWY 14

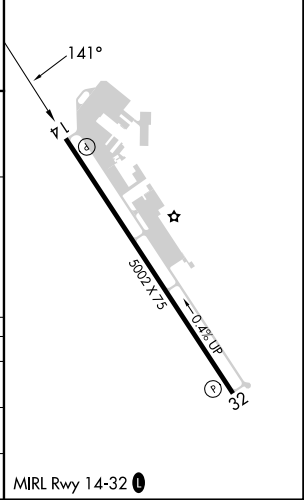
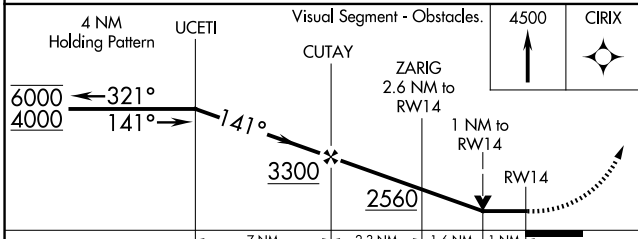
GILLESPIE COUNTY (T82)

RNP APCH.	MISSED APPROACH: Climb to 4500 direct CIRIX and hold.
Rwy 14 helicopter visibility reduction below 3/4 SM NA.	

AWOS-3 120.0	HOUSTON CENTER 134.2 307.3	UNICOM 122.7 (CTAF)
------------------------	--------------------------------------	-------------------------------



ELEV 1695	TDZE 1695
-----------	-----------



CATEGORY	A	B	C	D
LP MDA	2060-1 365 (400-1)			NA
LNAV MDA	2200-1	505 (600-1)	2200-1 3/8 505 (600-1 3/8)	NA
CIRCLING	2200-1 505 (600-1)	2480-1 785 (800-1)	2520-2 1/2 825 (900-2 1/2)	NA

SC-3, 14 MAY 2026 to 11 JUN 2026

SC-3, 14 MAY 2026 to 11 JUN 2026

MIRL Rwy 14-32