

APP CRS **194°**  
 Rwy Ldg **6001**  
 TDZE **3701**  
 Apt Elev **3706**

**RNAV (GPS) RWY 19**  
 MOORE COUNTY (DUX)

RNP APCH - GPS.

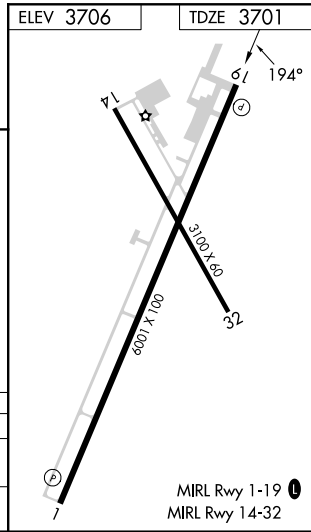
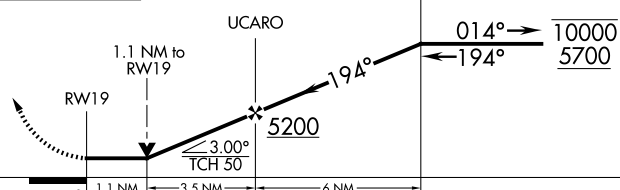
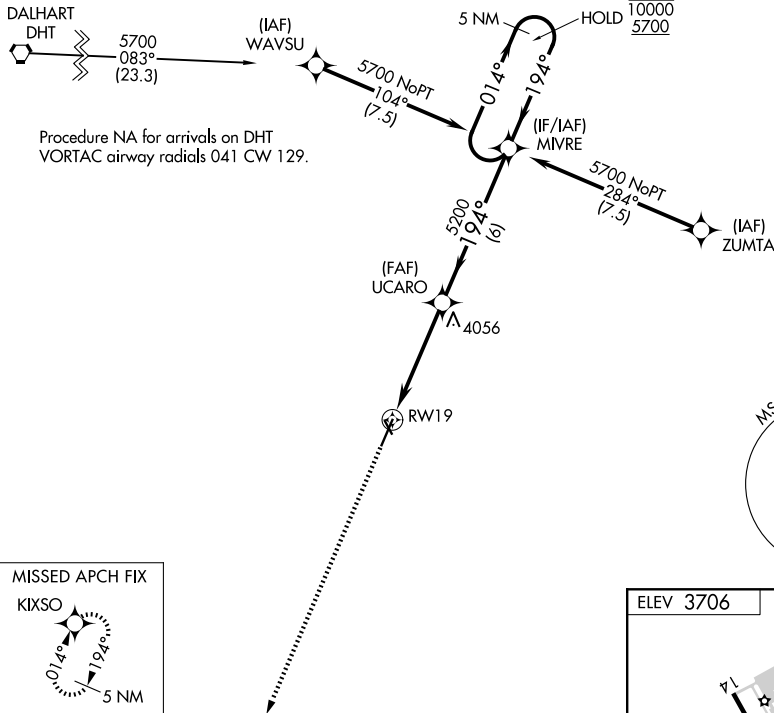
**▼** Circling Rwy 14, 32 NA at night.  
**▲** Rwy 19 helicopter visibility reduction below 3/4 SM NA.

MISSED APPROACH: Climb to 5700 direct KIXSO and hold.

AWOS-3PT  
**118.075**

ALBUQUERQUE CENTER  
**127.85 285.475**

UNICOM  
**122.8 (CTAF) ①**



SC-2, 14 MAY 2026 to 11 JUN 2026

SC-2, 14 MAY 2026 to 11 JUN 2026