

NDB/DME ROR 371	APP CRS 087°	Rwy Ldg 7200 TDZE 177 Apt Elev 177
Chan 104 (115.7)		

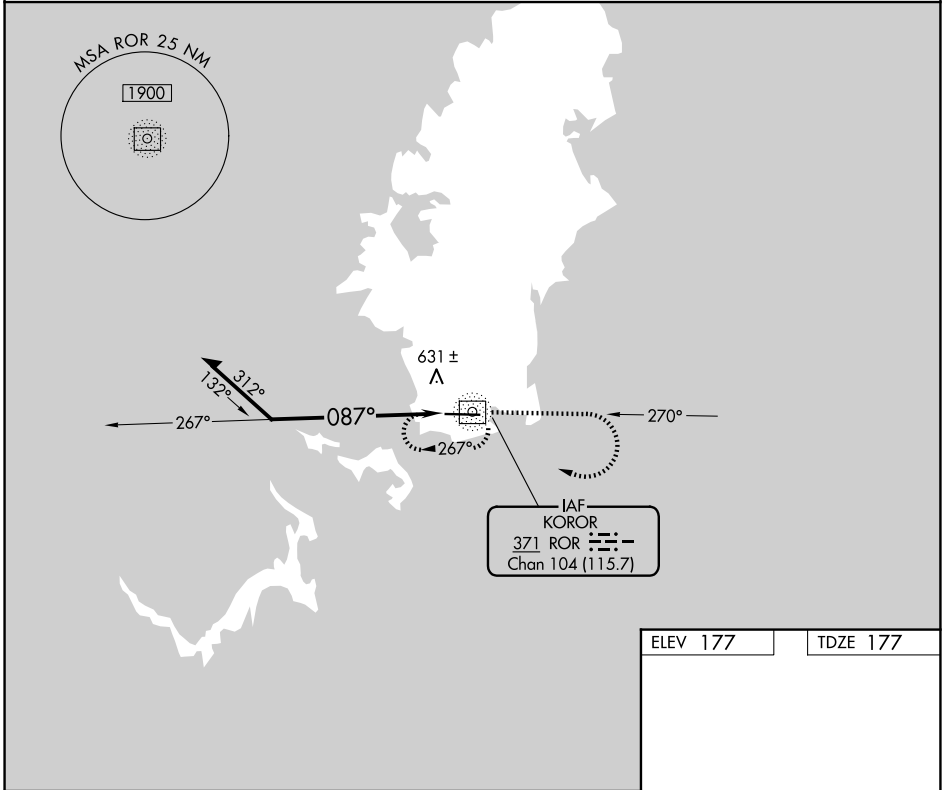
NDB RWY 9

PALAU INTL (ROR)(PTRO)

- ▼ Circling NA north of Rwy 9-27.
- ▲ Rwy 9 helicopter visibility reduction below 3/4 SM NA. Obtain local altimeter setting on CTAF; when not received, procedure NA. No controlled airspace below 5500.

MISSED APPROACH: Climb to 1900 on ROR bearing 090° then right turn direct ROR NDB/DME and hold.

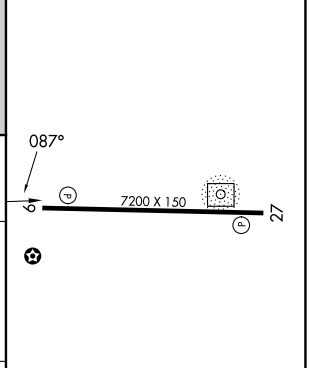
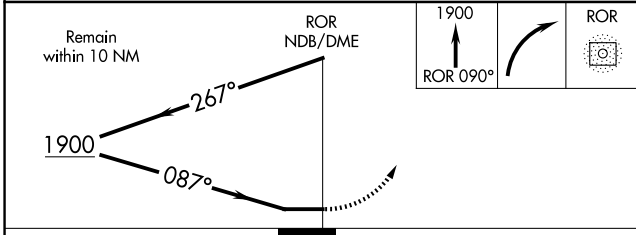
KOROR RADIO
123.6 (CTAF) 1



PAC, 14 MAY 2026 to 09 JUL 2026

PAC, 14 MAY 2026 to 09 JUL 2026

ELEV 177	TDZE 177
----------	----------



CATEGORY	A	B	C	D
S-9	1000-1 823 (900-1)	1000-1¼ 823 (900-1¼)	1000-2½	823 (900-2½)
CIRCLING	1000-1¼	823 (900-1¼)	1000-2½ 823 (900-2½)	1000-2¾ 823 (900-2¾)

MIRL Rwy 9-27 1
REIL Rws 9 and 27