

APP CRS
270°

Rwy Ldg **7200**
TDZE **176**
Apt Elev **177**

RNAV (GPS) RWY 27

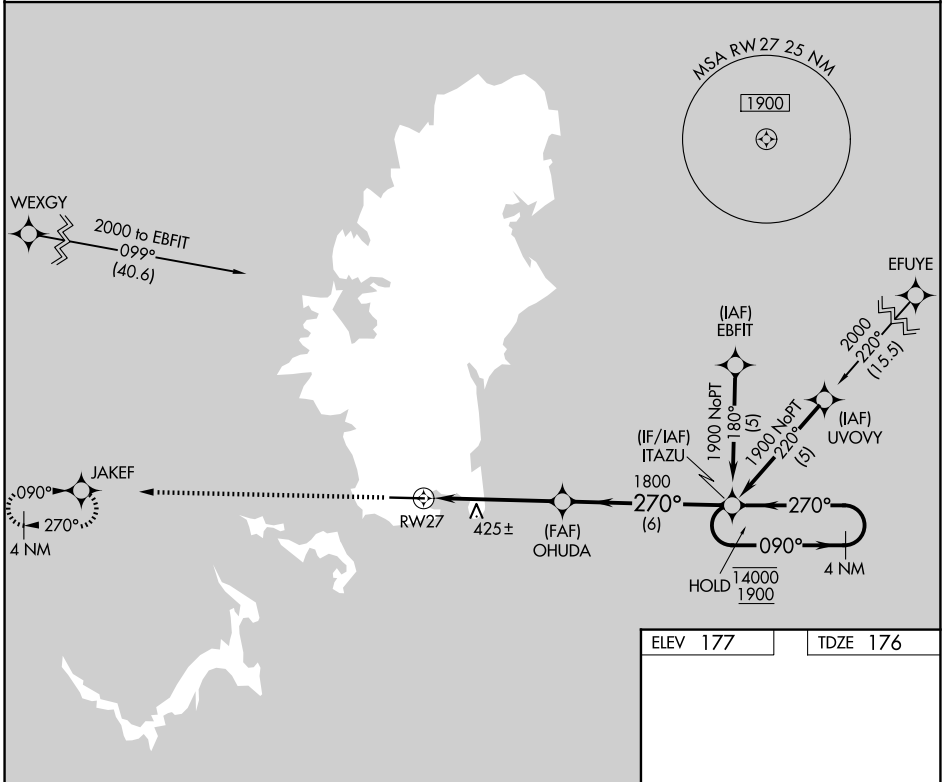
PALAU INTL (ROR)(PTRO)

RNP APCH-GPS.

⚠ Circling NA north of Rwy 9-27.
⚠ Rwy 27 helicopter visibility reduction below 3/4 SM NA.
Obtain local altimeter setting on CTAF; when not received,
procedure NA. No controlled airspace below 5500.

MISSED APPROACH: Climb to 1900 direct JAKEF and hold.

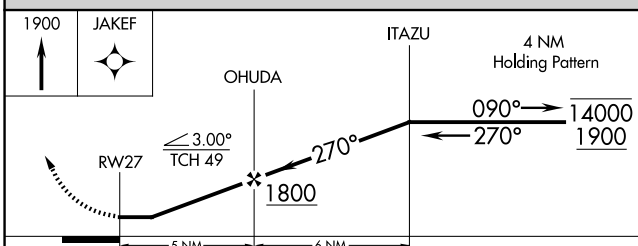
KOROR RADIO
123.6 (CTAF) **0**



PAC, 14 MAY 2026 to 09 JUL 2026

PAC, 14 MAY 2026 to 09 JUL 2026

ELEV 177 TDZE 176



CATEGORY	A	B	C	D
LNAV MDA	680-1	504 (600-1)	680-1 3/8	504 (600-1 3/8)
CIRCLING	700-1 523 (600-1)	760-1 583 (600-1)	780-1 3/4 603 (700-1 3/4)	780-2 603 (700-2)

MIRL Rwy 9-27 **0**
REIL Rws 9 and 27