

APP CRS	Rwy Idg	<b>2589</b>
<b>185°</b>	TDZE	<b>584</b>
	Apt Elev	<b>584</b>

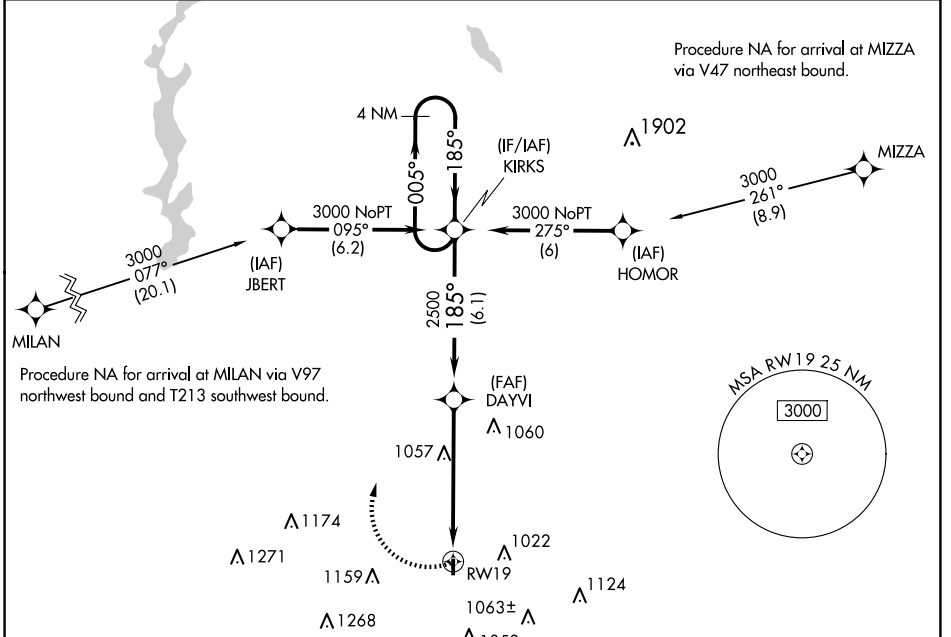
# RNAV (GPS) RWY 19

CINCINNATI WEST (I67)

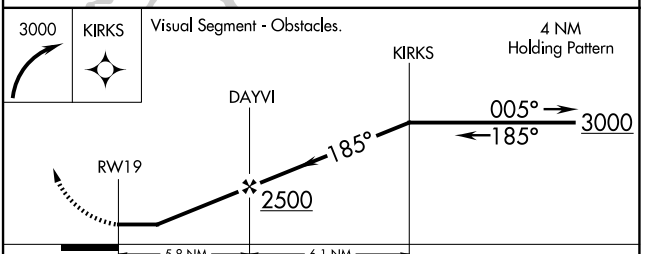
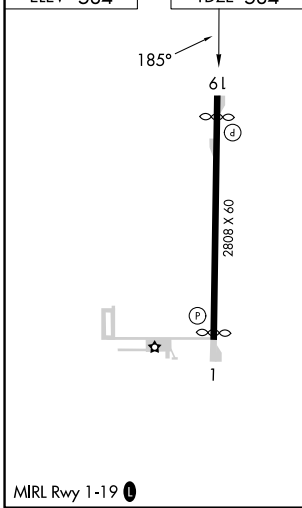
**⚠** DME/DME RNP-0.3 NA. Rwy 1, 19 helicopter visibility reduction below 1 SM NA.  
**⚠ NA** Use Butler Co Rgnl-Hogan Field altimeter setting, when not received, use Cincinnati/Northern Kentucky Intl altimeter setting and increase all MDA 40 feet. Procedure NA at night.

**MISSED APPROACH:**  
 Climbing right turn 3000 direct KIRKS and hold.

AWOS-3PT <b>118.15</b>	CINCINNATI APP CON <b>128.7 254.25</b>	UNICOM <b>123.0 (CTAF)</b>
---------------------------	-------------------------------------------	-------------------------------



ELEV 584	TDZE 584
----------	----------



CATEGORY	A	B	C	D
LNAV MDA	1380-1 796 (800-1)	1380-1¼ 796 (800-1¼)	NA	
CIRCLING	1380-1 796 (800-1)	1380-1¼ 796 (800-1¼)	NA	

EC-2, 14 MAY 2026 to 11 JUN 2026

EC-2, 14 MAY 2026 to 11 JUN 2026