

APP CRS 286°	Rwy Ldg TDZE Apt Elev	4001 683 683
------------------------	-----------------------------	---

RNAV (GPS) RWY 28

HENRY COUNTY (7W5)

RNP APCH.

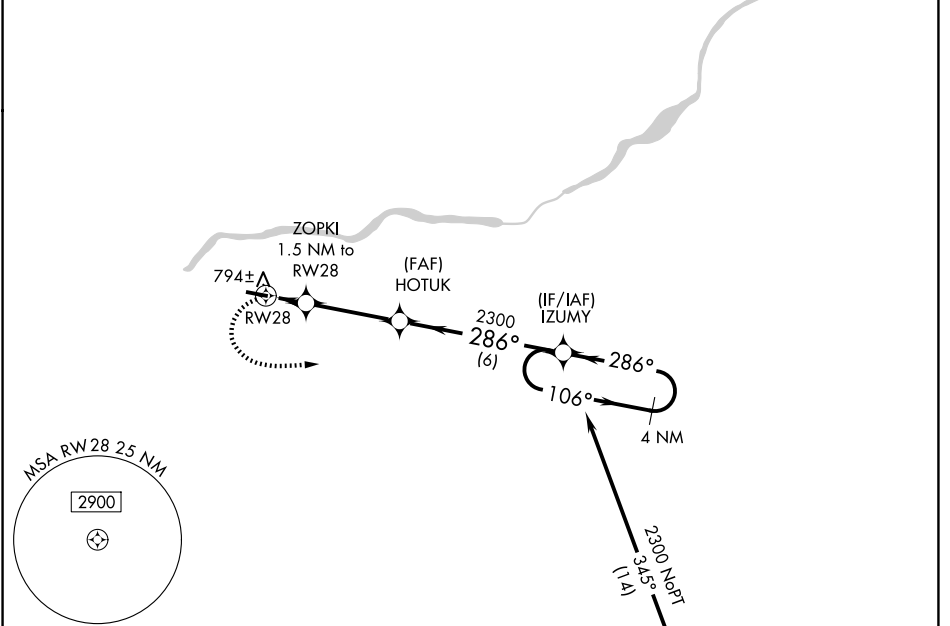
▼ Rwy 28 helicopter visibility reduction below 3/4 SM NA.
▲ NA Circling Rwy 10 NA at night. Use Toledo Express altimeter setting. When not received, procedure NA.

MISSED APPROACH: Climbing left turn to 2300 direct IZUMY and hold.

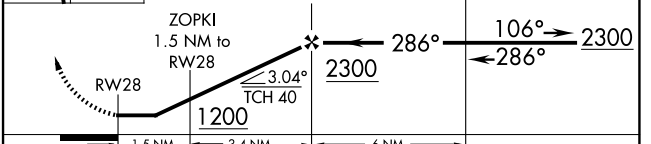
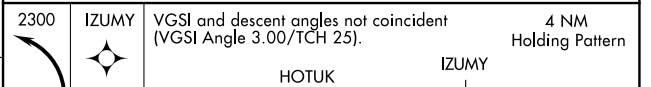
TOL ASOS 118.75 290.225

TOLEDO APP CON 134.35 307.0

UNICOM 123.0 (CTAF) 0



ELEV 683	TDZE 683
----------	----------



CATEGORY	A	B	C	D
LNAV MDA	1100-1	417 (500-1)	1100-1 1/8 417 (500-1 1/8)	NA
CIRCLING	1220-1	537 (600-1)	1400-2 717 (800-2)	NA

REIL Rwy 10-28 **0**
 MIRL Rwy 10-28 **0**

EC-2, 14 MAY 2026 to 11 JUN 2026

EC-2, 14 MAY 2026 to 11 JUN 2026