

| | | |
|-------------|----------|-------------|
| APP CRS | Rwy Idg | 4504 |
| 152° | TDZE | 268 |
| | Apt Elev | 269 |

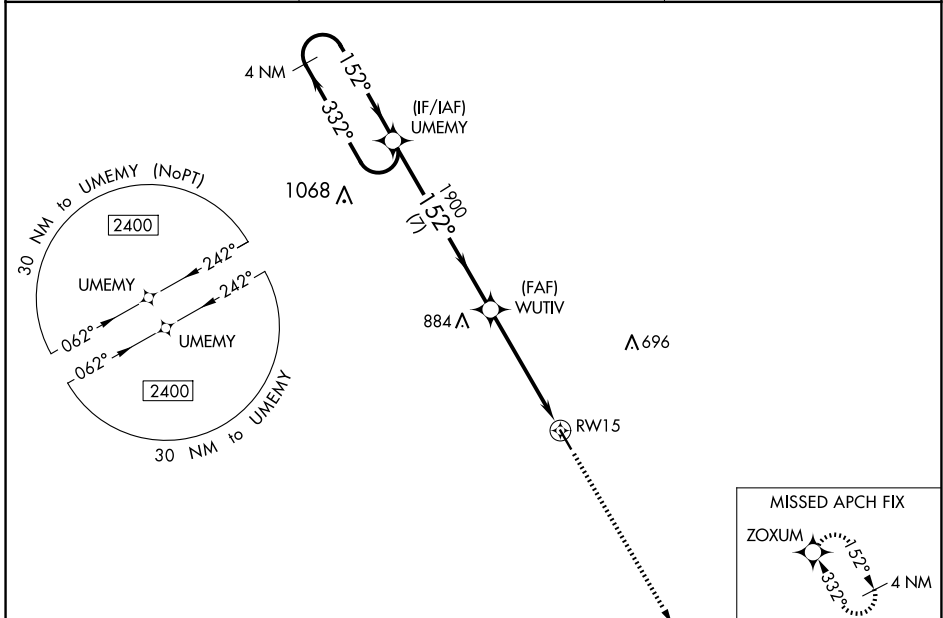
RNAV (GPS) RWY 15

GIDEON MEML (M85)

▽ DME/DME RNP-0.3 NA. Procedure NA at night. Helicopter visibility reduction below 1 SM NA. Obtain Arkansas Intl altimeter setting on CTAF (122.7), when not received, use Poplar Bluff Muni altimeter setting and increase all MDA 20 feet and Circling Cat C visibility $\frac{1}{8}$ mile.

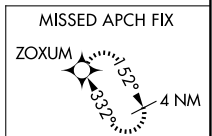
MISSED APPROACH: Climb to 2400 direct ZOXUM and hold.

| | | |
|--------------------------|--|----------------------|
| BYH CTAF 122.7 | MEMPHIS CENTER 133.65 292.15 | CTAF 122.9 |
|--------------------------|--|----------------------|

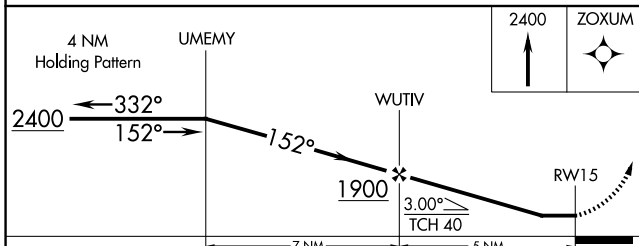
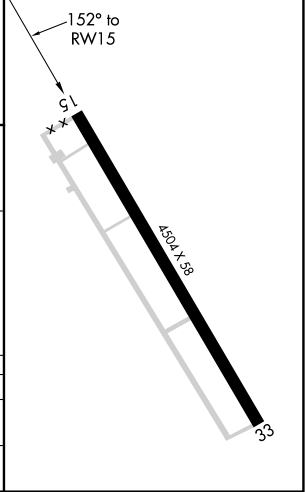


NC-3, 14 MAY 2026 to 11 JUN 2026

NC-3, 14 MAY 2026 to 11 JUN 2026



| | |
|----------|----------|
| ELEV 269 | TDZE 268 |
|----------|----------|



| CATEGORY | A | B | C | D |
|----------|-------|-------------|---|----|
| RNAV MDA | 820-1 | 552 (600-1) | 820-1 $\frac{1}{8}$ 552 (600-1 $\frac{1}{8}$) | NA |
| CIRCLING | 860-1 | 591 (600-1) | 900-1 $\frac{3}{4}$ 631 (700-1 $\frac{3}{4}$) | NA |