

DALLAS FOUR DEPARTURE
(DALL4.TT) 27NOV25

MESQUITE, TEXAS
MESQUITE METRO (HQZ)

LONE STAR DEP CON
124.3 282.275 (NORTH)
125.2 343.65 (SOUTH)

RADAR and DME required.

TAKEOFF MINIMUMS
Rwys 18, 36: Standard.

TOP ALTITUDE:
ASSIGNED BY ATC

BONHAM
114.6 BYP
Chan 93

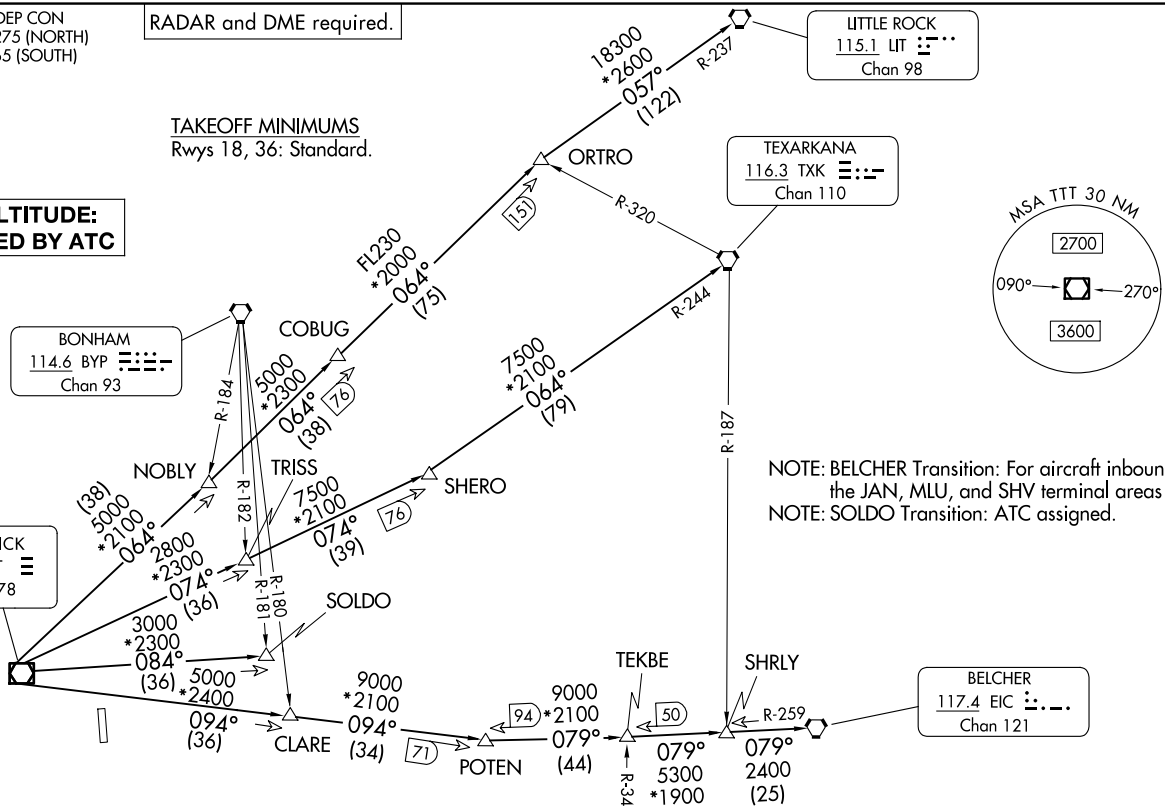
MAVERICK
113.1 TTT
Chan 78

GREGG COUNTY
112.9 GGG
Chan 76

LITTLE ROCK
115.1 LIT
Chan 98

TEXARKANA
116.3 TXK
Chan 110

BELCHER
117.4 EIC
Chan 121



NOTE: BELCHER Transition: For aircraft inbound to the JAN, MLU, and SHV terminal areas only.
NOTE: SOLDO Transition: ATC assigned.

(CONTINUED ON FOLLOWING PAGE)

NOTE: Chart not to scale.

(DALL4.TT) 25331
DALLAS FOUR DEPARTURE

AL-6444 (FAA)

MESQUITE METRO (HQZ)
MESQUITE, TEXAS

DALLAS FOUR DEPARTURE



DEPARTURE ROUTE DESCRIPTION

Fly assigned heading for RADAR vectors to appropriate route. Maintain ATC assigned altitude.

BELCHER TRANSITION (DALL4.EIC): From over TTT VOR/DME on TTT R-094 to POTEN, then on EIC R-259 to EIC VORTAC.

LITTLE ROCK TRANSITION (DALL4.LIT): From over TTT VOR/DME on TTT R-064 to ORTRO, then on LIT R-237 to LIT VORTAC.

SOLDO TRANSITION (DALL4.SOLDO): From over TTT VOR/DME on TTT R-084 to SOLDO.

TEXARKANA TRANSITION (DALL4.TXK): From over TTT VOR/DME on TTT R-074 to SHERO, then on TXK R-244 to TXK VORTAC.

SC-2, 14 MAY 2026 to 11 JUN 2026

SC-2, 14 MAY 2026 to 11 JUN 2026