

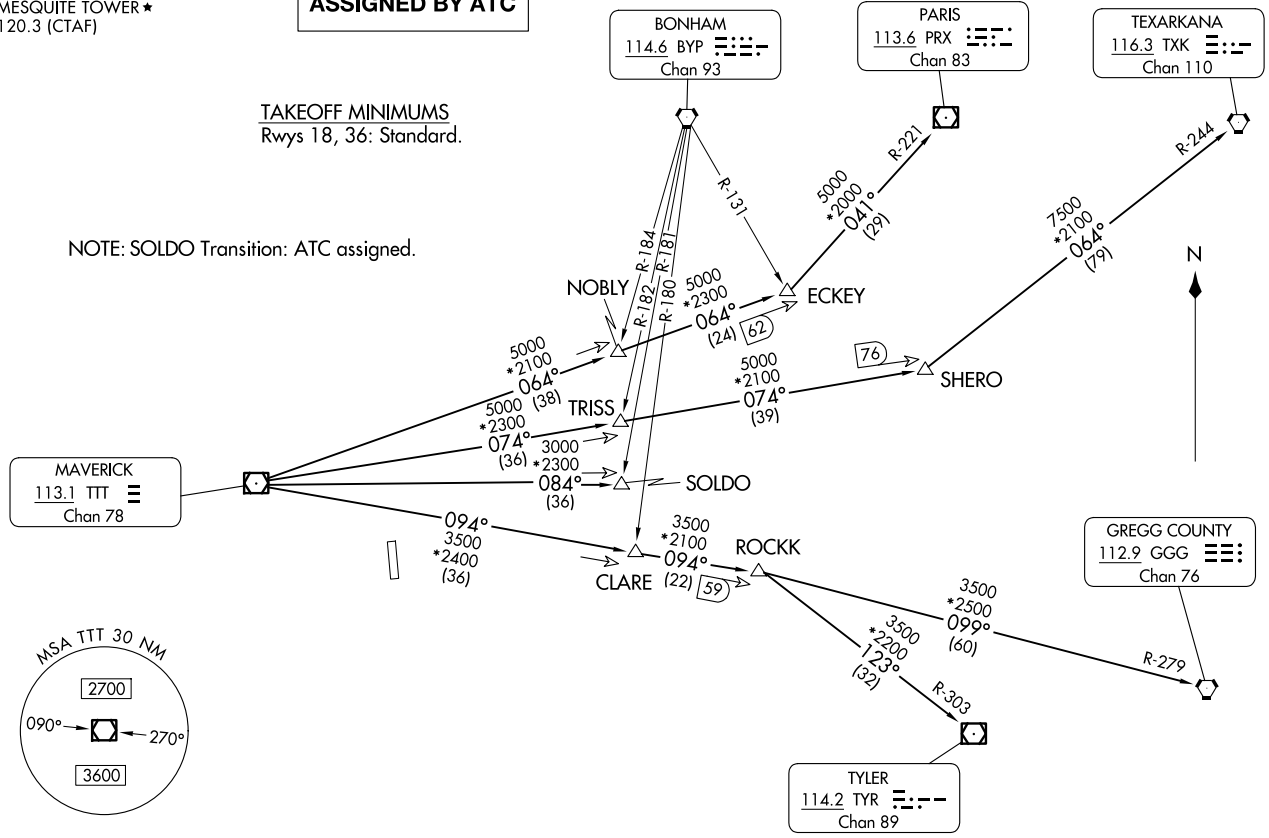
RADAR and DME required.

**TOP ALTITUDE:
ASSIGNED BY ATC**

LONE STAR DEP CON
125.2 343.65
MESQUITE TOWER ★
120.3 (CTAF)

TAKEOFF MINIMUMS
Rwys 18, 36: Standard.

NOTE: SOLDO Transition: ATC assigned.



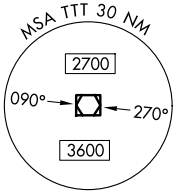
GARLAND SIX DEPARTURE
(GARL6.TT) 17AR25

MESQUITE METRO (HQZ)
MESQUITE, TEXAS

(GARL6.TT) 25107
GARLAND SIX DEPARTURE

AL-6444 (FAA)

MESQUITE METRO (HQZ)
MESQUITE, TEXAS



NOTE: Chart not to scale.

(CONTINUED ON FOLLOWING PAGE)

GARLAND SIX DEPARTURE



DEPARTURE ROUTE DESCRIPTION

When entering controlled airspace, fly assigned heading for RADAR vectors to appropriate route. Maintain ATC assigned altitude.

GREGG COUNTY TRANSITION (GARL6.GGG): From over TTT VOR/DME on TTT R-094 to ROCKK, then on GGG R-279 to GGG VORTAC.

PARIS TRANSITION (GARL6.PRX): From over TTT VOR/DME on TTT R-064 to ECKEY, then on PRX R-221 to PRX VOR/DME.

SOLDO TRANSITION (GARL6.SOLDO): From over TTT VOR/DME on TTT R-084 to SOLDO.

TEXARKANA TRANSITION (GARL6.TXK): From over TTT VOR/DME on TTT R-074 to SHERO, then on TXK R-244 to TXK VORTAC.

TYLER TRANSITION (GARL6.TYR): From over TTT VOR/DME on TTT R-094 to ROCKK, then on TYR R-303 to TYR VOR/DME.

SC-2, 14 MAY 2026 to 11 JUN 2026

SC-2, 14 MAY 2026 to 11 JUN 2026