

WAAS CH 58301 W18A	APP CRS 178°	Rwy Ldg TDZE 447 Apt Elev 447
--	------------------------	---

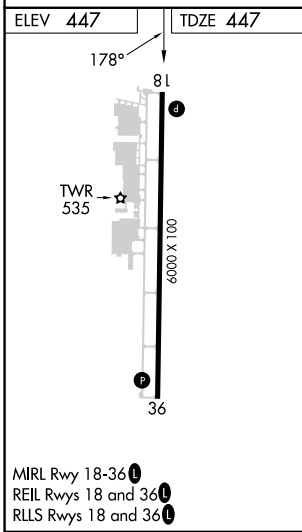
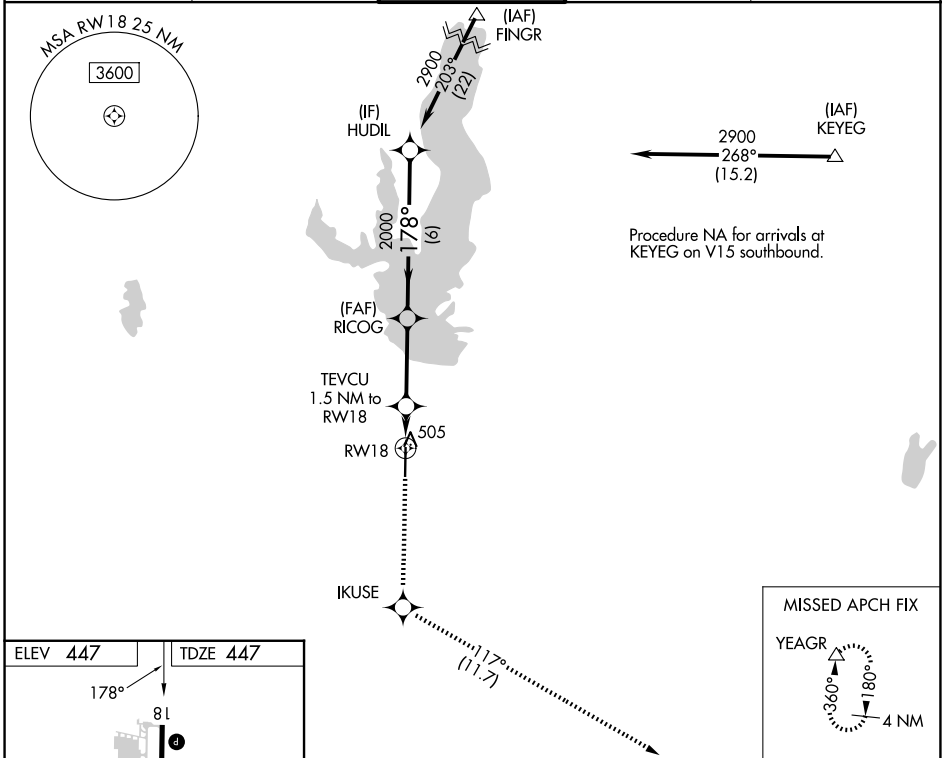
RNAV (GPS) RWY 18

MESQUITE METRO (HQZ)

⚠ DME/DME RNP-0.3 NA. When local altimeter setting not received, use Dallas Love Fld altimeter setting and increase all DA/MDA 60 feet. Increase LPV all Cats visibility to 1 mile, LNAV Cat C visibility to 1 3/8 and Circling Cat C visibility to 2 1/4. Helicopter visibility reduction below 3/4 SM NA.

MISSED APPROACH: Climb to 3000 direct IKUSE then on track 117° to YEAGR and hold.

AWOS-3 118.175	LONE STAR APP CON 125.2 343.65	MESQUITE TOWER★ 120.3 (CTAF) 0	GND CON 118.85	UNICOM 123.05
--------------------------	--	---	--------------------------	-------------------------



3000	↑	IKUSE	tr 117°	YEAGR	△	HUDIL	
*LNAV only.							
RWY 18		TEVCU 1.5 NM to RWY 18	RICOG 2000	2000		2900	
1.5 NM		3.1 NM		6 NM		GP 3.00° TCH 56	
CATEGORY	A		B		C		D
LPV DA	697-3/4		250 (300-3/4)		NA		NA
LNAV MDA	860-1	413 (500-1)		860-1 1/8 413 (500-1 1/8)		NA	NA
CIRCLING	960-1	513 (600-1)		1160-2 713 (800-2)		NA	NA

MESQUITE, TEXAS
Amdt 1A 25JUN15

32°45'N-96°32'W

MESQUITE METRO (HQZ)
RNAV (GPS) RWY 18

SC-2, 14 MAY 2026 to 11 JUN 2026

SC-2, 14 MAY 2026 to 11 JUN 2026