

WAAS CH 99536 W15A	APP CRS 151°	Rwy Ldg TDZE 198 Apt Elev 198	4000
--	------------------------	---	-------------

RNAV (GPS) RWY 15

BELFAST MUNI (BST)

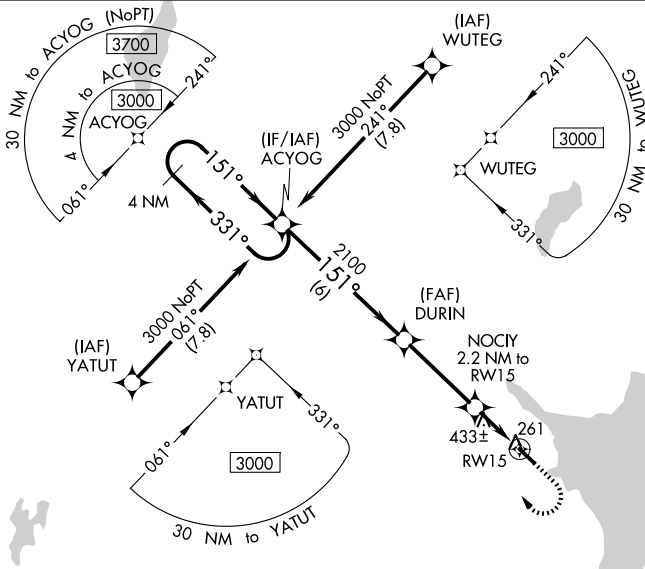
For uncompensated Baro-VNAV systems, LNAV/VNAV NA below -23°C (-9°F) or above 54°C (130°F). DME/DME RNP -0.3 NA. When local altimeter not received, use Bangor Intl altimeter setting and increase all DA/MDA 60 feet. Increase LPV all Cats visibility 1/8 mile; increase LNAV/VNAV all Cats visibility 1/4 mile; increase LNAV and Circling Cat C visibility 1/4 mile. Baro-VNAV NA when using Bangor Intl altimeter. Helicopter visibility reduction below 3/4 SM NA.

MISSED APPROACH: Climb to 900 then climbing right turn to 3000 direct ACYOG and hold.

AWOS-AV
122.975

BANGOR APP CON
118.925 239.3

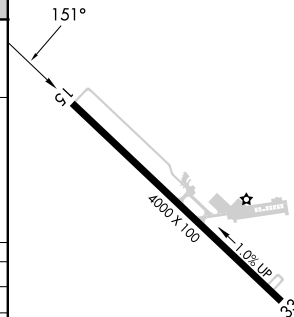
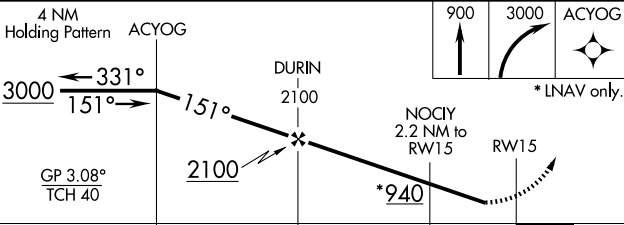
UNICOM
122.975 (CTAF) 0



NE-1, 14 MAY 2026 to 11 JUN 2026

NE-1, 14 MAY 2026 to 11 JUN 2026

ELEV 198	TDZE 198
----------	----------



CATEGORY	A	B	C	D
LPV DA	487-1 289 (300-1)			NA
LNAV/VNAV DA	748-1 7/8 550 (600-1 7/8)			NA
LNAV MDA	720-1 522 (600-1)		720-1 1/2 522 (600-1 1/2)	NA
CIRCLING	720-1 522 (600-1)	800-1 602 (700-1)	1040-2 1/2 842 (900-2 1/2)	NA

MIRL Rwy 15-33 0
REIL Rwy 15 and 33 0