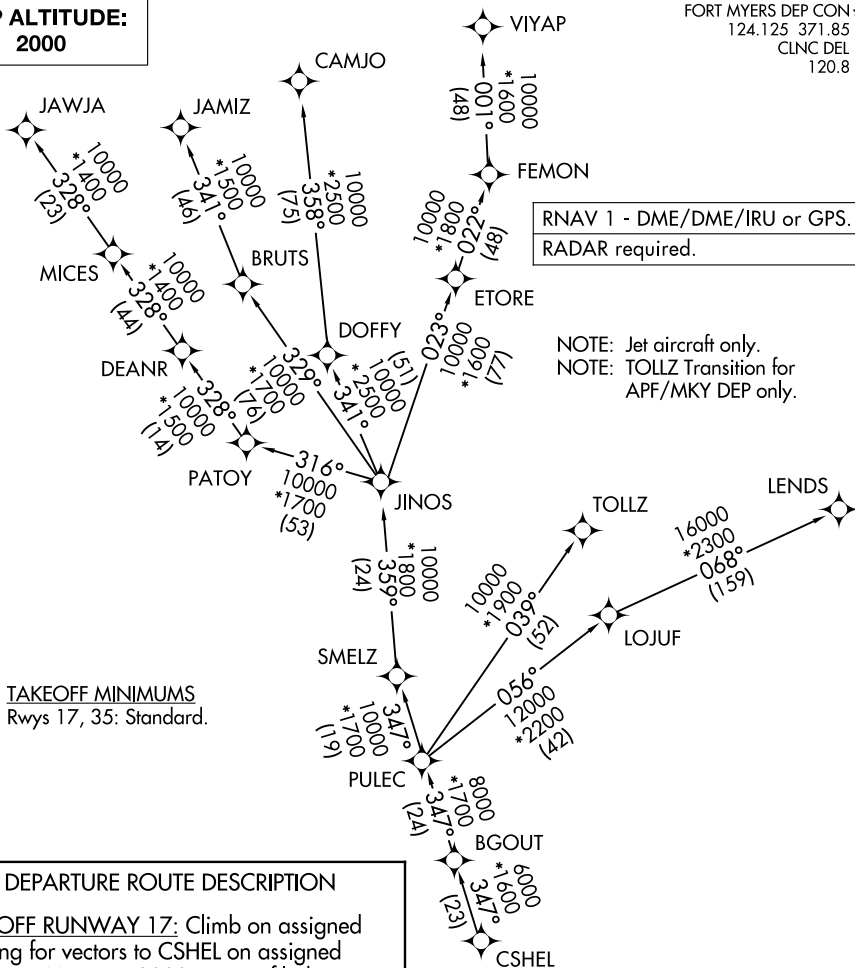


CSHEL EIGHT DEPARTURE (RNAV)

FORT MYERS DEP CON*
124.125 371.85
CLNC DEL
120.8

**TOP ALTITUDE:
2000**



TAKEOFF MINIMUMS
Rwys 17, 35: Standard.

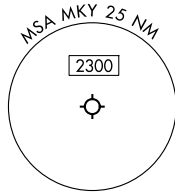
DEPARTURE ROUTE DESCRIPTION

TAKEOFF RUNWAY 17: Climb on assigned heading for vectors to CSHEL on assigned transition. Maintain 2000. Expect filed altitude 10 minutes after departure.

TAKEOFF RUNWAY 35: Climb on heading 005° to 700 for vectors to CSHEL, thence. . .

. . . on assigned transition. Maintain 2000. Expect filed altitude 10 minutes after departure.

- CAMJO TRANSITION (CSHEL8.CAMJO)
- JAMIZ TRANSITION (CSHEL8.JAMIZ)
- JAWJA TRANSITION (CSHEL8.JAWJA)
- LEND S TRANSITION (CSHEL8.LEND S)
- TOLLZ TRANSITION (CSHEL8.TOLLZ)
- VIYAP TRANSITION (CSHEL8.VIYAP)



NOTE: Chart not to scale.

CSHEL EIGHT DEPARTURE (RNAV)

(CSHEL8.CSHEL) 22JAN26

MARCO ISLAND, FLORIDA
MARCO ISLAND EXEC (MKY)

SE-3, 14 MAY 2026 to 11 JUN 2026

SE-3, 14 MAY 2026 to 11 JUN 2026