

WAAS CH <b>65813</b> <b>W16A</b>	APP CRS <b>155°</b>	Rwy Ldg <b>5816</b> TDZE <b>3174</b> Apt Elev <b>3174</b>
--	------------------------	---

# RNAV (GPS) RWY 16

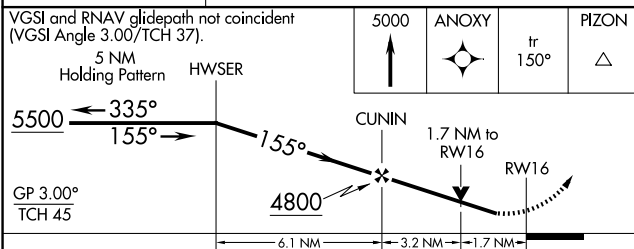
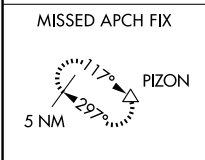
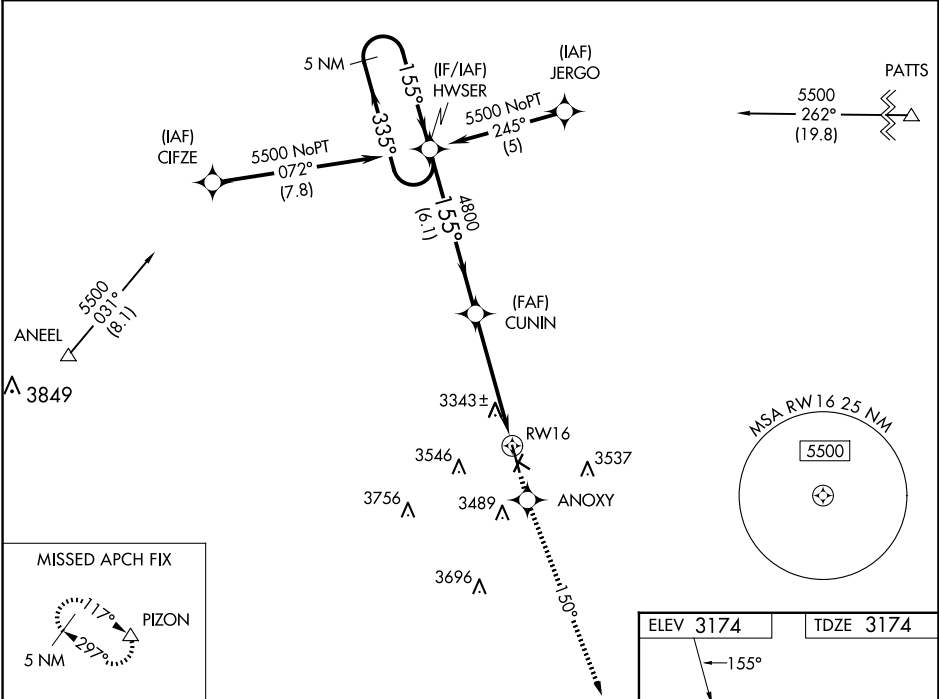
ANDREWS COUNTY (E11)

RNP APCH-GPS.

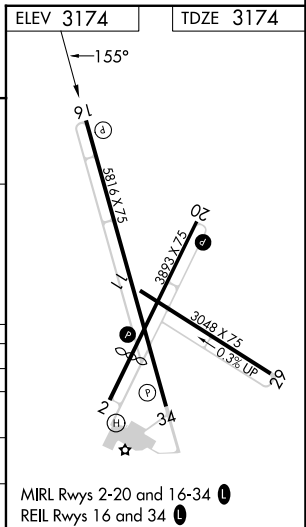
**▼** Circling NA west of Rwy 16/34. Rwy 16 helicopter visibility reduction below 3/4 SM NA.  
**▲** When local altimeter setting not received, use Midland altimeter setting. For uncompensated Baro-VNAV systems, LNAV/VNAV NA below -21°C or above 54°C. Circling Rwy 2, 11, 20, 29, 34 NA at night. VDP NA when using Midland altimeter setting.

**MISSED APPROACH:** Climb to 5000 direct ANOXY and via track 150° to PIZON and hold.

AWOS - 3 <b>118.2</b>	MIDLAND APP CON ★ <b>124.6 290.4</b>	UNICOM <b>122.8 (CTAF) 0</b>
--------------------------	---	---------------------------------



CATEGORY	A	B	C	D
LPV DA	3533-1¼	359 (400-1¼)		NA
LNAV/VNAV DA	3802-2¼	628 (700-2¼)		NA
LNAV MDA	3780-1	606 (700-1)	3780-1¾ 606 (700-1¾)	NA
CIRCLING	3780-1	606 (700-1)	4000-2½ 826 (900-2½)	NA



SC-2, 14 MAY 2026 to 11 JUN 2026

SC-2, 14 MAY 2026 to 11 JUN 2026