

(DAWNN1.DAWNN) 23334  
**DAWNN ONE DEPARTURE**

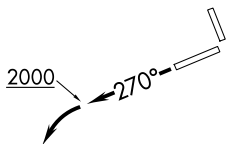
AL-6452 (FAA)

INDIANAPOLIS RGNL (MQJ)  
 INDIANAPOLIS, INDIANA

**TOP ALTITUDE:  
 ASSIGNED BY ATC**

AWOS-3PT  
 124.175  
 CLNC DEL  
 119.25  
 INDIANAPOLIS DEP CON  
 127.15 317.8

BRICKYARD  
 116.3 VHP  
 Chan 110



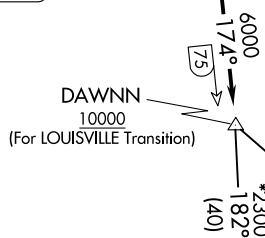
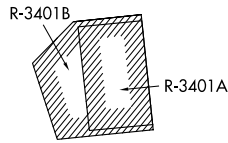
R-098  
 TERRE HAUTE  
 115.3 TTH  
 Chan 100

R-174  
 (28)  
 SNEVA  
 RADAR

TAKEOFF MINIMUMS:  
 Rwy 7, 16, 25: Standard.  
 Rwy 34: 300-1 or standard with minimum climb  
 of 347' per NM to 1100.

R-113  
 HOOSIER  
 110.2 OOM  
 Chan 39

(47)  
 FOYTT  
 RADAR



LOUISVILLE  
 114.8 IU  
 Chan 95

MYSTIC  
 108.2 MYS

EC-2, 14 MAY 2026 to 11 JUN 2026

EC-2, 14 MAY 2026 to 11 JUN 2026

- NOTE: RADAR required.
- NOTE: Select appropriate localizer/DME frequency/channel prior to departure.
- NOTE: Turbojets accelerate to 250K until reaching 10000, if unable advise ATC.
- NOTE: Assigned to aircraft with a requested altitude of 11000 or above.

(NARRATIVE ON FOLLOWING PAGE)

NOTE: Chart not to scale.

**DAWNN ONE DEPARTURE**  
 (DAWNN1.DAWNN) 07DEC17

INDIANAPOLIS, INDIANA  
 INDIANAPOLIS RGNL (MQJ)



DEPARTURE ROUTE DESCRIPTION

TAKEOFF RWY 25: Climb heading 270° to 2000 before turning left.  
Then on assigned heading to assigned altitude. Thence....

DEPARTING ALL OTHER AUTHORIZED RUNWAYS/AIRPORTS: Climb on  
assigned heading to assigned altitude. Thence....

....on RADAR vectors to join VHP R-174 to DAWNN INT then on transition or  
assigned route. Expect clearance to requested altitude ten minutes after departure.

LOUISVILLE TRANSITION (DAWNN1.IIU): From over DAWNN INT on IIU R-311 to  
IIU VORTAC.

MYSTIC TRANSITION (DAWNN1.MYS): From over DAWNN INT on MYS R-002 to  
MYS VOR.

EC-2, 14 MAY 2026 to 11 JUN 2026

EC-2, 14 MAY 2026 to 11 JUN 2026