


(OOM5.OOM) 23334

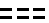
# HOOSIER FIVE DEPARTURE

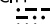
AL-6452 (FAA)

INDIANAPOLIS RGNL (MQJ)  
INDIANAPOLIS, INDIANA

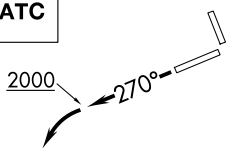
AWOS-3PT  
124.175  
CLNC DEL  
119.25  
INDIANAPOLIS DEP CON  
127.15 317.8

BRICKYARD  
116.3 VHP   
Chan 110

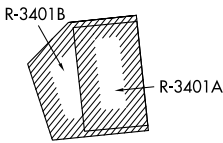
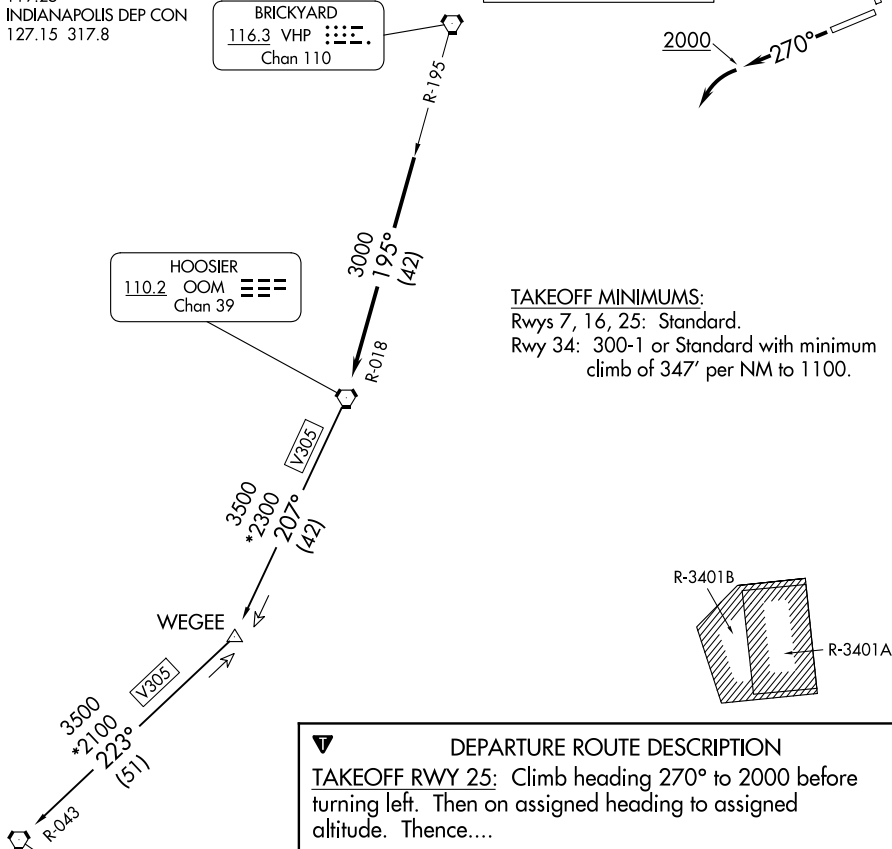
HOOSIER  
110.2 OOM   
Chan 39

POCKET CITY  
113.3 PXV   
Chan 80

**TOP ALTITUDE:  
ASSIGNED BY ATC**



**TAKEOFF MINIMUMS:**  
Rwys 7, 16, 25: Standard.  
Rwy 34: 300-1 or Standard with minimum  
climb of 347' per NM to 1100.



**DEPARTURE ROUTE DESCRIPTION**  
TAKEOFF RWY 25: Climb heading 270° to 2000 before turning left. Then on assigned heading to assigned altitude. Thence....  
DEPARTING ALL OTHER AUTHORIZED RUNWAYS: Climb on assigned heading to assigned altitude. Thence....  
....expect RADAR vectors to join VHP R-195 to OOM VORTAC then via transition or assigned route. Expect clearance to requested altitude ten minutes after departure.  
POCKET CITY TRANSITION (OOM5.PXV): From over OOM VORTAC via OOM R-207 to WEGEE, then via PXV R-043 to PXV VORTAC.

EC-2, 14 MAY 2026 to 11 JUN 2026

EC-2, 14 MAY 2026 to 11 JUN 2026

- NOTE: RADAR required.
- NOTE: Select appropriate localizer/DME frequency/channel prior to departure.
- NOTE: Turbojets accelerate to 250K until reaching 10000, if unable advise ATC.
- NOTE: Assigned to aircraft with a requested altitude of 11000 or above.

NOTE: Chart not to scale.

# HOOSIER FIVE DEPARTURE

(OOM5.OOM) 01FEB18

INDIANAPOLIS, INDIANA  
INDIANAPOLIS RGNL (MQJ)