

WAAS CH <b>69646</b> <b>W07A</b>	APP CRS <b>072°</b>	Rwy Ldg TDZE Apt Elev	<b>6005</b> <b>862</b> <b>862</b>
--	------------------------	-----------------------------	---

# RNAV (GPS) RWY 7

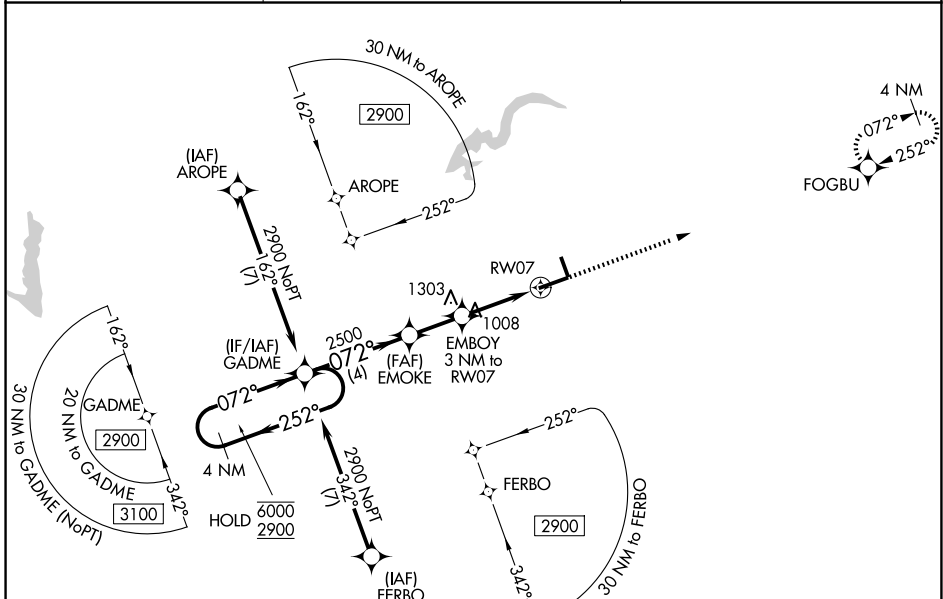
INDIANAPOLIS RGNL (MQJ)

RNP APCH - GPS.

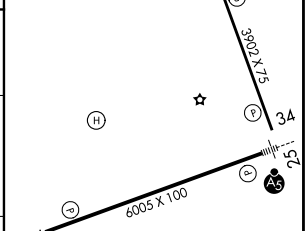
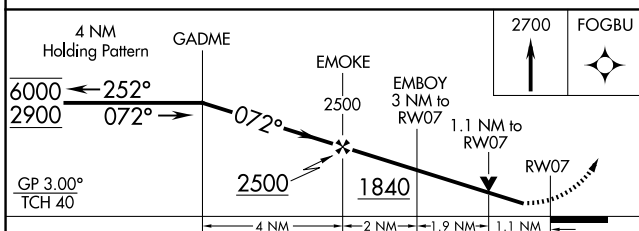
▼ For uncompensated Baro-VNAV systems, LNAV/VNAV NA below -16°C or above 54°C.  
 ▲ Rwy 7 helicopter visibility reduction below 3/4 SM NA. Baro-VNAV and VDP NA when using IND altimeter setting. When local altimeter setting not received, use IND altimeter setting and increase LPV DA to 1271 feet and all visibilities 1/8 SM; increase LNAV/VNAV DA to 1194 feet and all visibilities 1/8 SM; increase all MDAs 60 feet and LNAV visibility Cat C and D 1/4 SM.

MISSED APPROACH: Climb to 2700 direct FOGBU and hold.

AWOS-3PT <b>124.175</b>	INDIANAPOLIS APP CON <b>127.15 317.8</b>	UNICOM <b>122.975 (CTAF) 0</b>
----------------------------	---	-----------------------------------



ELEV 862	TDZE 862
----------	----------



CATEGORY	A	B	C	D
LPV DA		1216-1	354 (400-1)	
LNAV/VNAV DA		1139-7/8	277 (300-7/8)	
LNAV MDA	1260-1	398 (400-1)	1260-1 1/8	398 (400-1 1/8)

EC-2, 14 MAY 2026 to 11 JUN 2026

EC-2, 14 MAY 2026 to 11 JUN 2026