

**(ROCKY1.ROCKY) 23334**  
**ROCKY ONE DEPARTURE**

AL-6452 (FAA)

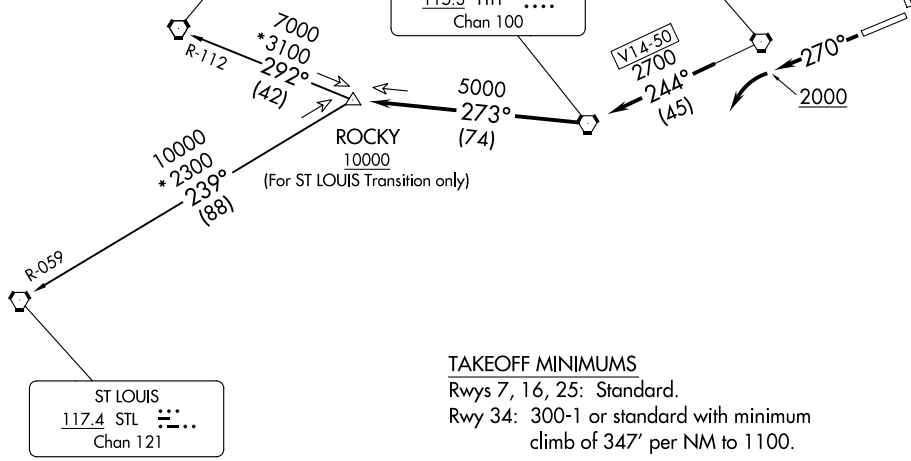
INDIANAPOLIS RGNL (MQJ)  
 INDIANAPOLIS, INDIANA

AWOS-3PT  
 124.175  
 CLNC DEL  
 119.25  
 INDIANAPOLIS DEP CON  
 127.15 317.8

SPINNER  
 112.7 SPI  
 Chan 74

BRICKYARD  
 116.3 VHP  
 Chan 110

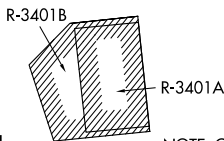
TERRE HAUTE  
 115.3 TTH  
 Chan 100



**TAKEOFF MINIMUMS**

Rwys 7, 16, 25: Standard.  
 Rwy 34: 300-1 or standard with minimum climb of 347' per NM to 1100.

- NOTE: RADAR required.
- NOTE: Select appropriate localizer/DME frequency/channel prior to departure.
- NOTE: Turbojets accelerate to 250K until reaching 10000, if unable advise ATC.
- NOTE: Assigned to aircraft with a requested altitude of 11000 or above.



NOTE: Chart not to scale.

**DEPARTURE ROUTE DESCRIPTION**

**TAKEOFF RWY 25:** Climb heading 270° to 2000 before turning left. Then on assigned heading to assigned altitude. Thence . . . .

**DEPARTING ALL OTHER AUTHORIZED RUNWAYS:** Climb on assigned heading to assigned altitude. Thence . . . .

. . . . expect RADAR vectors to join VHP R-244 to TTH VORTAC, then via TTH R-273 to ROCKY INT then via transition or assigned route. Expect clearance to requested altitude ten minutes after departure.

**SPINNER TRANSITION (ROCKY1.SPI):** From over ROCKY INT on SPI R-112 to SPI VORTAC.  
**ST LOUIS TRANSITION (ROCKY1.STL):** From over ROCKY INT on STL R-059 to STL VORTAC.

**ROCKY ONE DEPARTURE**  
**(ROCKY1.ROCKY) 01FEB18**

INDIANAPOLIS, INDIANA  
 INDIANAPOLIS RGNL (MQJ)

EC-2, 14 MAY 2026 to 11 JUN 2026

EC-2, 14 MAY 2026 to 11 JUN 2026