

VOR/DME SHB	APP CRS	Rwy Ldg	<b>3902</b>
<b>116.15</b>	<b>346°</b>	TDZE	<b>857</b>
Chan <b>108 (Y)</b>		Apt Elev	<b>862</b>

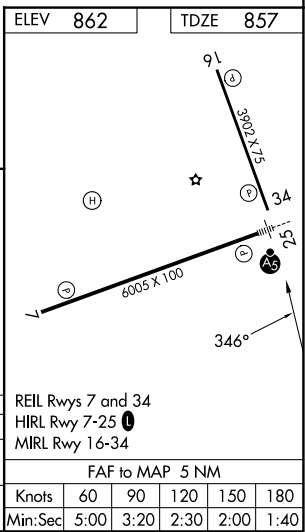
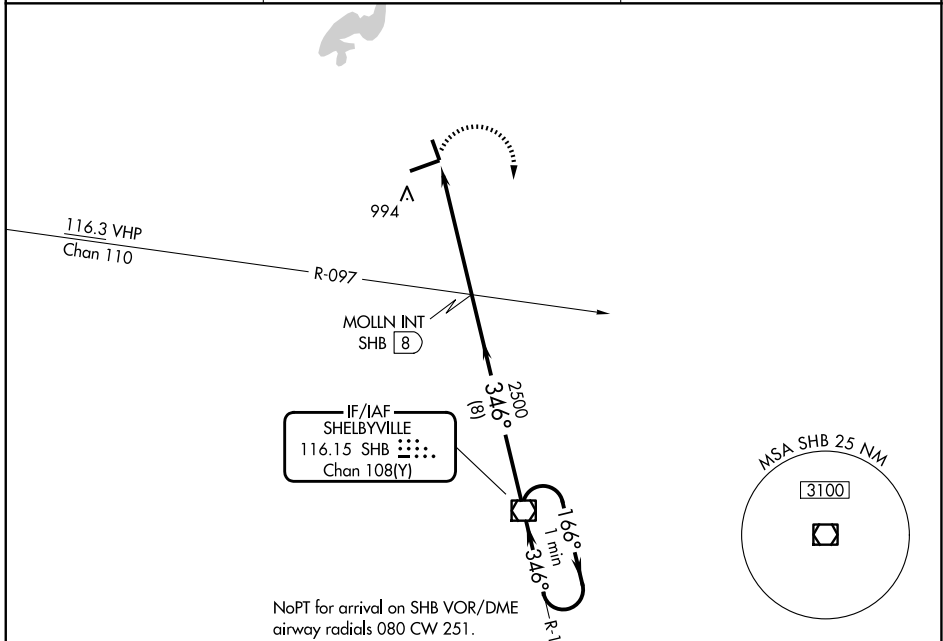
# VOR RWY 34

INDIANAPOLIS RGNL (MQJ)

**▽** When local altimeter setting not received, use Indianapolis Intl altimeter setting and increase all MDA 60 feet and Circling Cat D visibility ¼ SM.  
**△ NA** VDP NA when using Indianapolis Intl altimeter setting. Rwy 34 helicopter visibility reduction below ¾ SM NA.

MISSED APPROACH: Climbing right turn to 2500 direct SHB VOR/DME and hold.

AWOS-3PT <b>124.175</b>	INDIANAPOLIS APP CON <b>127.15 317.8</b>	UNICOM <b>122.975 (CTAF) 0</b>
----------------------------	---	-----------------------------------



CATEGORY	A	B	C	D
S-34	1300-1	443 (500-1)	1300-1 3/8	443 (500-1 3/8)
CIRCLING	1340-1	478 (500-1)	1360-1 1/2	1660-2 1/2
			498 (500-1 1/2)	798 (800-2 1/2)

EC-2, 14 MAY 2026 to 11 JUN 2026

EC-2, 14 MAY 2026 to 11 JUN 2026