

(LFK4.LFK) 25331

AL-6453 (FAA)

TEXAS GULF COAST RGNL (LBX)  
ANGLETON/LAKE JACKSON, TEXAS

# LUFKIN FOUR DEPARTURE

HOUSTON DEP CON  
134.45 284.0  
ASOS  
119.925  
CLNC DEL  
125.2  
CTAF  
123.0

**TOP ALTITUDE:  
ASSIGNED BY ATC**

LITTLE ROCK  
115.1 LIT ::::  
Chan 98

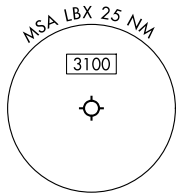
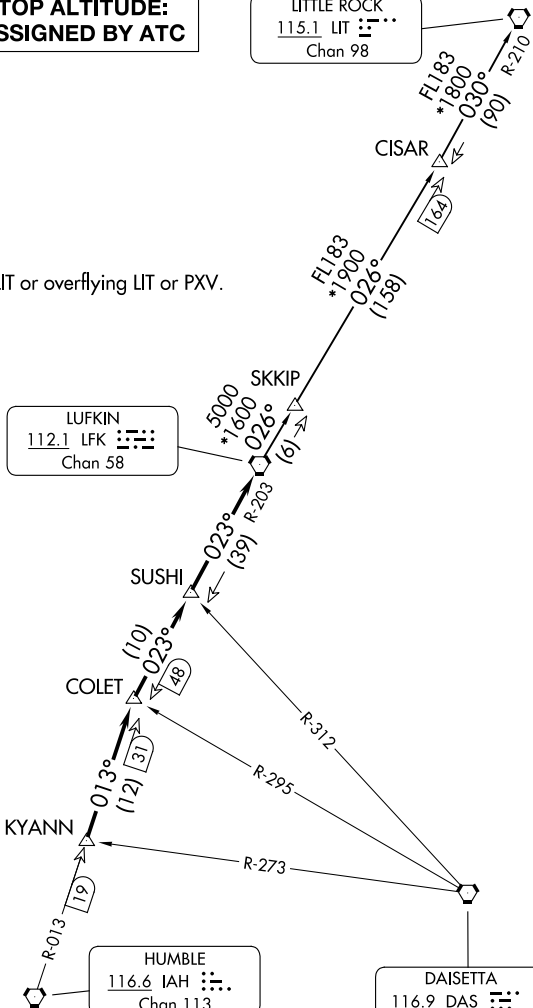
RADAR and DME required.

NOTE: For aircraft destined LIT or overflying LIT or PXV.

LUFKIN  
112.1 LFK ::::  
Chan 58

HUMBLE  
116.6 IAH ::::  
Chan 113

DAISETTA  
116.9 DAS ::::  
Chan 116



**TAKEOFF MINIMUMS**  
Rwys 17, 35: Standard.

NOTE: Chart not to scale.

(CONTINUED ON FOLLOWING PAGE)

SC-5, 14 MAY 2026 to 11 JUN 2026

SC-5, 14 MAY 2026 to 11 JUN 2026

LUFKIN FOUR DEPARTURE  
(LFK4.LFK) 27NOV25

ANGLETON/LAKE JACKSON, TEXAS  
TEXAS GULF COAST RGNL (LBX)

# LUFKIN FOUR DEPARTURE



## DEPARTURE ROUTE DESCRIPTION

TAKEOFF ALL RUNWAYS: When entering controlled airspace, climb on assigned heading for RADAR vectors to KYANN INT. Maintain ATC assigned altitude. Expect filed altitude 10 minutes after departure, thence. . .

. . .on IAH R-013 to COLET INT, then on depicted route to LFK VORTAC.

LITTLE ROCK TRANSITION (LFK4.LIT): From over LFK VORTAC on LFK R-026 to CISAR, then on LIT R-210 to LIT VORTAC.

SC-5, 14 MAY 2026 to 11 JUN 2026

SC-5, 14 MAY 2026 to 11 JUN 2026