


WAAS CH 70316 W17A	APP CRS 175°	Rwy Ldg 7000 TDZE 25 Apt Elev 25
----------------------------------------	------------------------	-------------------------------------------------------------

RNAV (GPS) RWY 17

TEXAS GULF COAST RGNL (L.B.X)

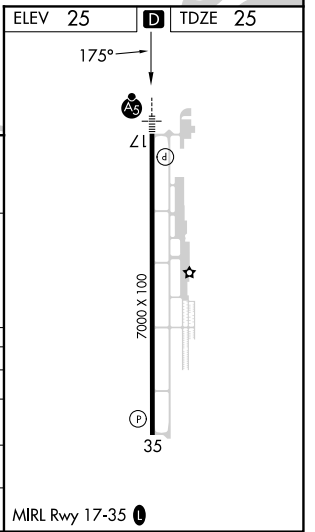
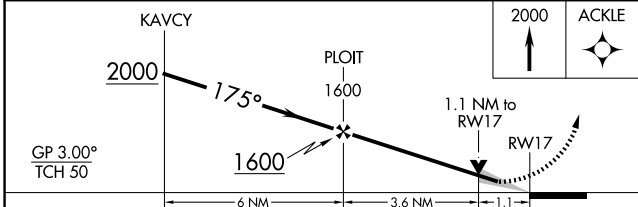
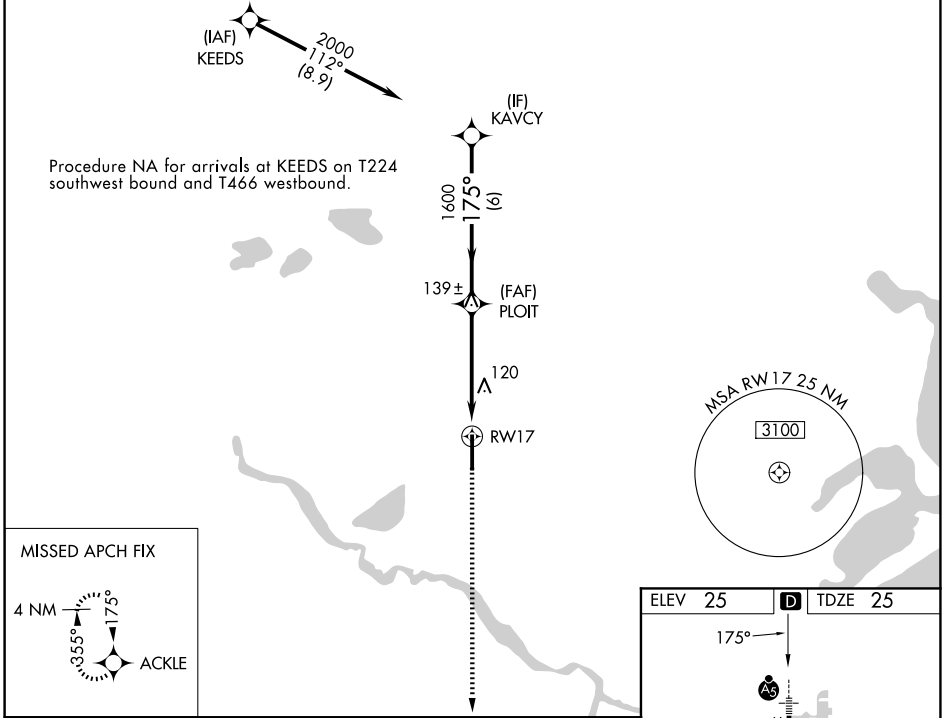
RNP APCH - GPS.

⚠ Circling NA east of Rwy 17-35. Baro-VNAV and VDP NA when using HOU altimeter setting. For uncompensated Baro-VNAV systems, LNAV/VNAV NA below -16°C or above 54°C. When local altimeter setting not received, use HOU altimeter setting and increase LPV DA to 363 feet; increase LNAV/VNAV DA to 441 feet and all visibilities ¼ SM; increase all MDAs 100 feet and LNAV visibility Cat C/D ⅔ SM, and Circling visibility Cat D ¼ SM.

MALSR 

MISSED APPROACH: Climb to 2000 direct ACKLE and hold.

ASOS 119,925	HOUSTON APP CON 134.45 284.0	CLNC DEL 125.2	UNICOM 123.0 (CTAF) 0
------------------------	----------------------------------------	--------------------------	---------------------------------



CATEGORY	A	B	C	D
LPV DA		282-½	257 (300-½)	
LNAV/VNAV DA		360-½	335 (400-½)	
LNAV MDA	420-½	395 (400-½)	420-⅝	395 (400-⅝)
CIRCLING	480-1 455 (500-1)	500-1 475 (500-1)	500-1½ 475 (500-1½)	620-2 595 (600-2)

SC-5, 14 MAY 2026 to 11 JUN 2026

SC-5, 14 MAY 2026 to 11 JUN 2026