

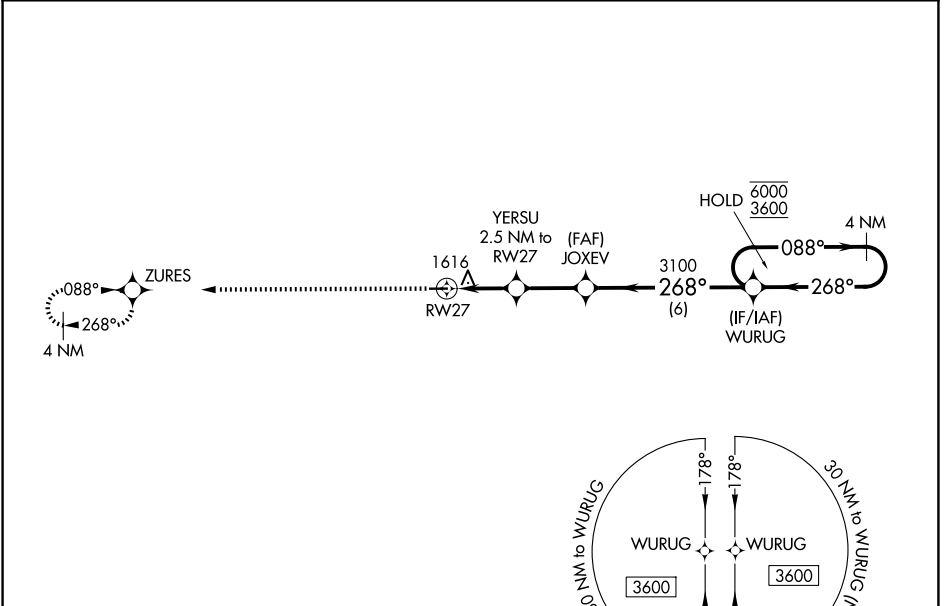
WAAS CH <b>50331</b> <b>W27A</b>	APP CRS <b>268°</b>	Rwy Ldg TDZE Apt Elev	<b>3599</b> <b>1483</b> <b>1483</b>
--	------------------------	-----------------------------	---

# RNAV (GPS) RWY 27

CASSVILLE MUNI (94K)

RNP APCH - GPS.	MISSED APPROACH: Climb to 3300 direct ZURES and hold.
<p><b>▽</b> Procedure NA at night. Use Monett altimeter setting, when not received, use Rogers altimeter setting and increase all MDA 20 feet. Increase LP Cat C visibility 1/8 SM.</p> <p><b>△</b> NA</p>	

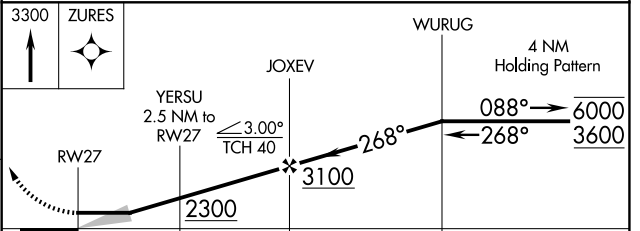
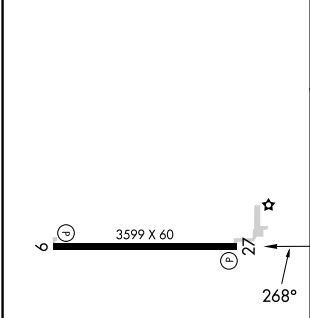
HFJ AWOS-3 <b>118.275</b>	SPRINGFIELD APP CON <b>124.95 318.2</b>	CTAF <b>122.9</b>
------------------------------	--	----------------------



NC-3, 14 MAY 2026 to 11 JUN 2026

NC-3, 14 MAY 2026 to 11 JUN 2026

ELEV <b>1483</b>	TDZE <b>1483</b>
------------------	------------------



CATEGORY	A	B	C	D
LP MDA	1920-1	437 (500-1)	1920-1¼ 437 (500-1¼)	NA
LNAV MDA	1940-1	457 (500-1)	1940-1⅝ 457 (500-1⅝)	NA
CIRCLING	2000-1 517 (600-1)	2180-1 697 (700-1)	2180-2 697 (700-2)	NA