

WAAS CH <b>97348</b> <b>W33A</b>	APP CRS <b>327°</b>	Rwy ldg TDZE Apt Elev	<b>3393</b> <b>61</b> <b>62</b>
--	------------------------	-----------------------------	---------------------------------------

# RNAV (GPS) RWY 33

JACKSON COUNTY (26R)

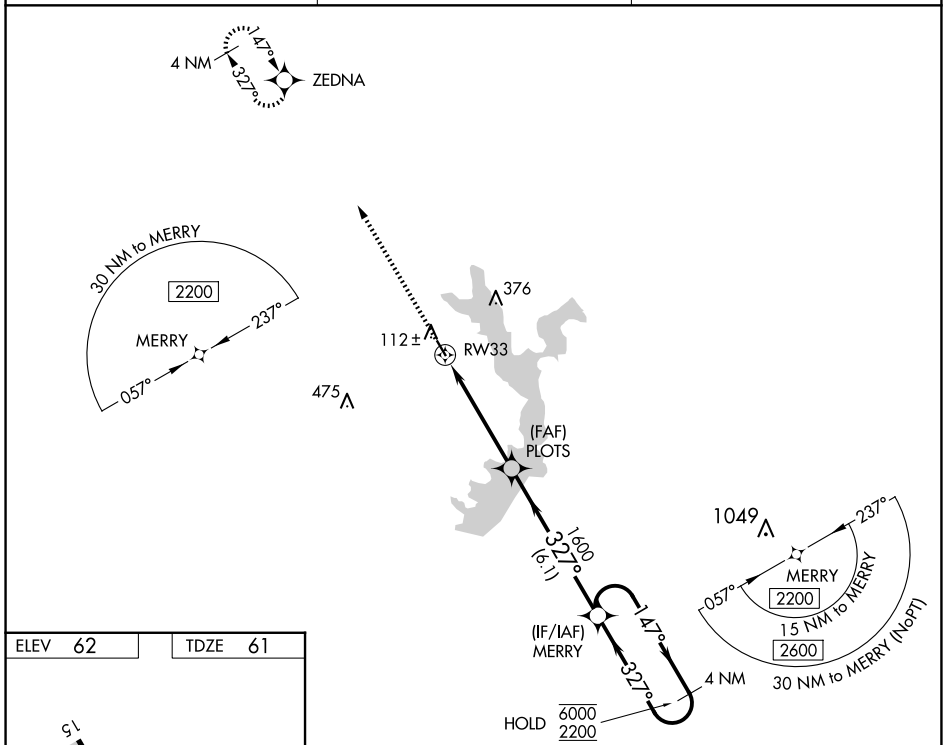
RNP APCH - GPS.  
 ▼ Baro-VNAV NA.  
 ▲ NA Use VCT altimeter setting, when not received, use PKV altimeter setting.

MISSED APPROACH: Climb to 2200 direct ZEDNA and hold.

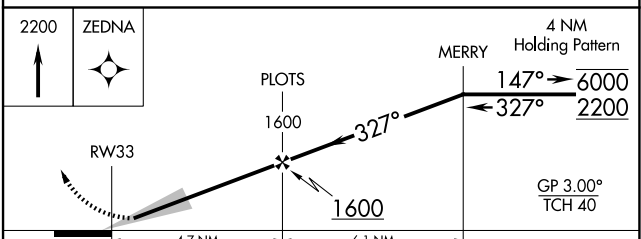
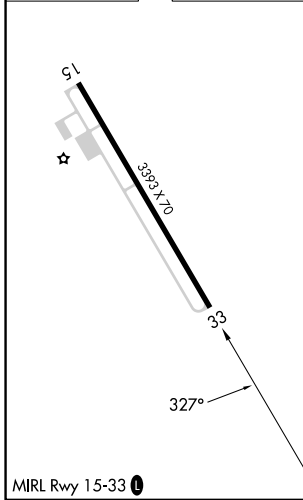
VCT ASOS  
**119.025**

HOUSTON CENTER  
**135.05 353.6**

UNICOM  
**122.8 (CTAF) 0**



ELEV 62	TDZE 61
---------	---------



CATEGORY	A	B	C	D
LPV DA	315-3/4	254 (300-3/4)		NA
LNAV/VNAV DA	365-7/8	304 (400-7/8)		NA
LNAV MDA	560-1	499 (500-1)		NA

SC-5, 14 MAY 2026 to 11 JUN 2026

SC-5, 14 MAY 2026 to 11 JUN 2026