

WAAS CH 90327 W32A	APP CRS 315°	Rwy Idg TDZE Apt Elev	5006 665 678
--	------------------------	-----------------------------	---

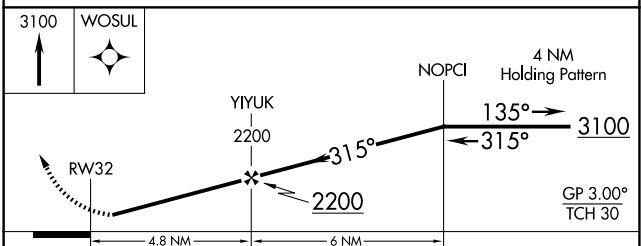
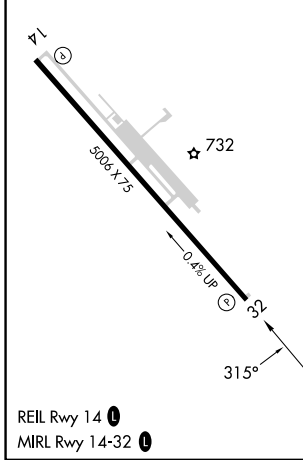
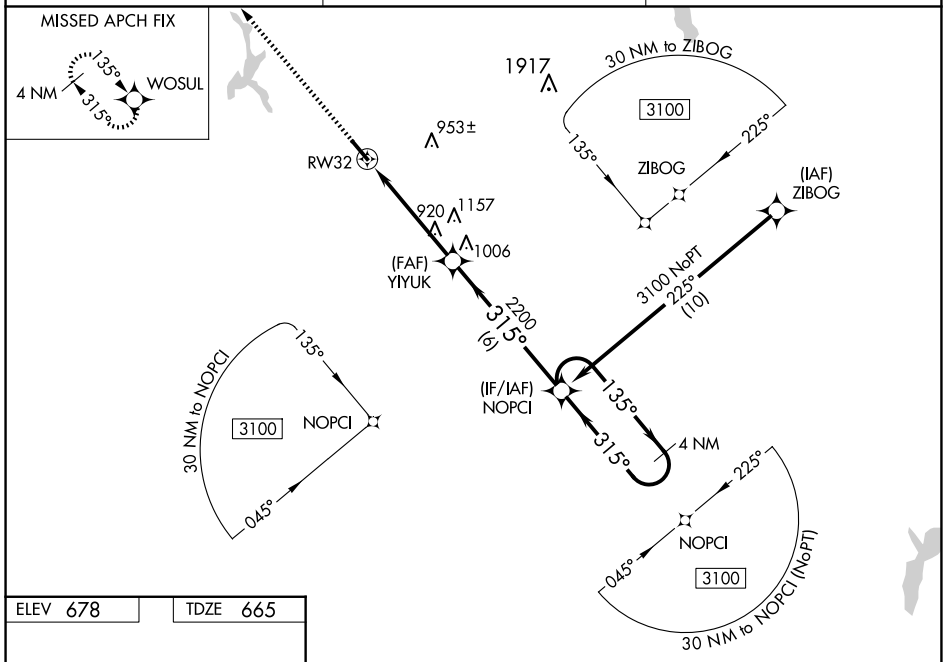
RNAV (GPS) RWY 32

CHEROKEE COUNTY (JSO)

⚠ Baro-VNAV NA when using Nacogdoches altimeter setting. For uncompensated Baro-VNAV systems, LNAV/VNAV NA below -16°C (4°F) or above 54°C (130°F). When local altimeter setting not received, use Nacogdoches altimeter setting and increase DA 118 feet, increase all MDA 120 feet and LPV, LNAV/VNAV visibility all Cats ¼ mile, LNAV and Circling Cat C visibility ⅜ mile. When VGSi inop, Straight-in/Circling Rwy 32 procedure NA at night. DME/DME RNP-0.3 NA. Visibility reduction by helicopters NA.

MISSED APPROACH: Climb to 3100 direct WOSUL and hold.

AWOS-3 119.075	LONGVIEW APP CON * 128.75 379.15	UNICOM 122.7 (CTAF) ①
--------------------------	--	---------------------------------



CATEGORY	A	B	C	D
LPV DA	915-1	250 (300-1)		NA
LNAV/VNAV DA	915-1	250 (300-1)		NA
LNAV MDA	1220-1	555 (600-1)	1220-1½ 555 (600-1½)	NA
CIRCLING	1220-1	542 (600-1)	1280-1¾ 602 (700-1¾)	NA

SC-5, 14 MAY 2026 to 11 JUN 2026

SC-5, 14 MAY 2026 to 11 JUN 2026