

VOR/DME MBS 114.35 Chan 90 (Y)	APP CRS 125°	Rwy Ldg TDZE Apt Elev 602	N/A N/A
--	------------------------	--	--------------------------

VOR/DME-A

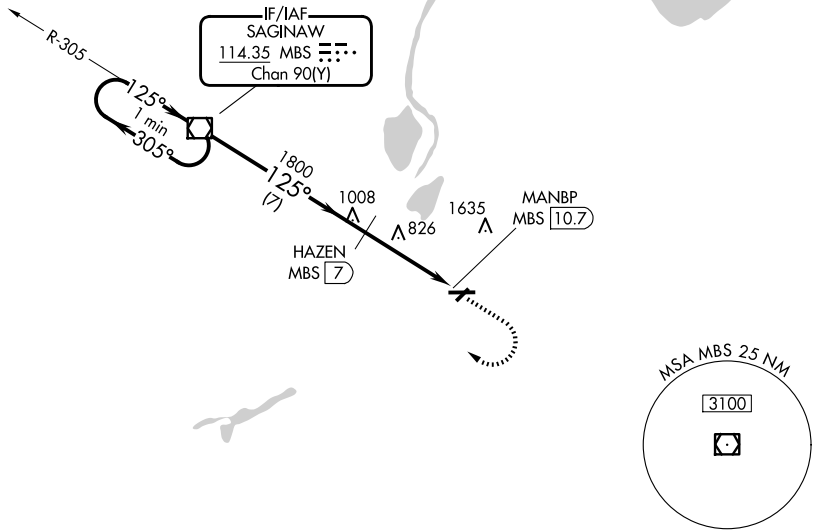
SAGINAW COUNTY/H W BROWNE (HYX)

⚠ Circling to Rwy 5/23 NA at night. When local altimeter setting not received, use Saginaw MBS Intl altimeter setting and increase all MDA 40 feet and increase Circling Cat C visibility ¼ SM. Circling NA for Cat C north of Rwy 10-28.

⚠ MISSED APPROACH: Climb to 1900 then climbing right turn to 3000 direct MBS VOR/DME and hold.

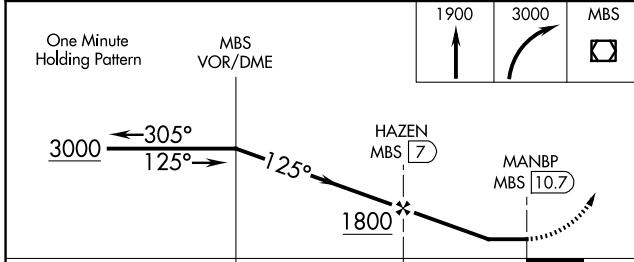
AWOS-3P 118,325	GREAT LAKES APP CON ★ 120,95 235,625	UNICOM 122.8 (CTAF) 0
---------------------------	--	--

NoPT for arrival on MBS VOR/DME
airway radials 212 CW 016.



EC-1, 14 MAY 2026 to 11 JUN 2026

EC-1, 14 MAY 2026 to 11 JUN 2026



CATEGORY	A	B	C	D	REIL Rwy 10 0
CIRCLING	1160-1	558 (600-1)	1460-2½ 858 (900-2½)	NA	HIRL Rwy 10-28 0
					MIRL Rwy 5-23 0

VOR/DME-A