

APP CRS	Rwy Ldg	N/A
005°	TDZE	N/A
	Apt Elev	1694

# RNAV (GPS)-B

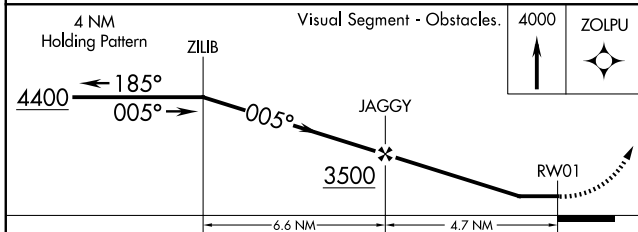
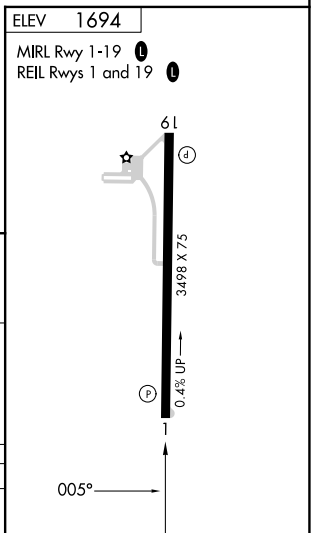
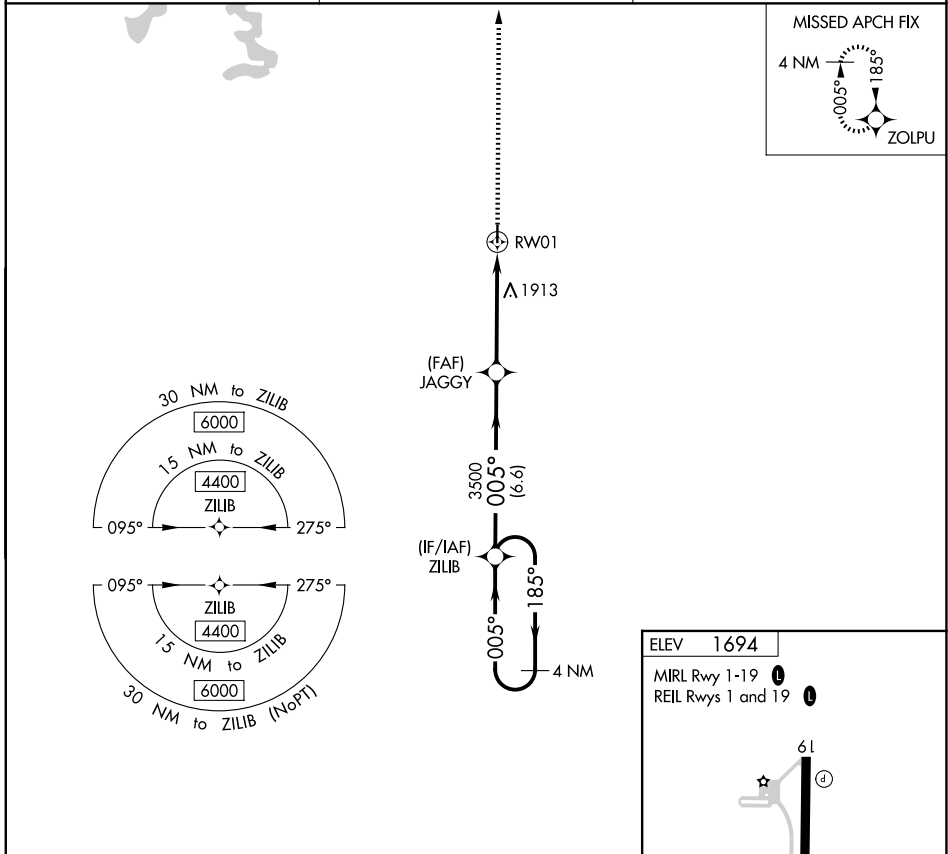
JAMESTOWN MUNI (2A1)

RNP APCH - GPS.

**NA** Obtain local altimeter setting on CTAF, when not received, use Crossville altimeter setting and increase all MDA 100 feet and Cat C visibility 1/2 SM. Rwy 19 helicopter visibility reduction below 1 SM NA. Circling to Rwy 19 NA at night.

MISSED APPROACH: Climb to 4000 direct ZOLPU and hold.

CSV ASOS <b>120.625</b>	INDIANAPOLIS CENTER <b>124.625 371.925</b>	UNICOM <b>122.8 (CTAF) 0</b>
----------------------------	---	---------------------------------



CATEGORY	A	B	C	D
CIRCLING	2180-1 486 (500-1)	2260-1 566 (600-1)	2340-1 3/4 646 (700-1 3/4)	NA

SE-1, 14 MAY 2026 to 11 JUN 2026

SE-1, 14 MAY 2026 to 11 JUN 2026