

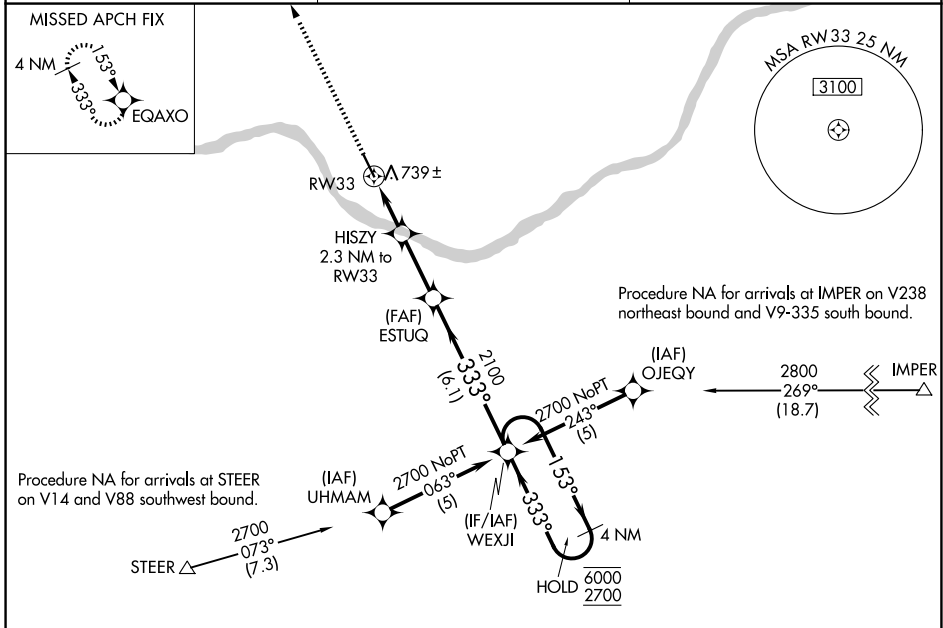
WAAS CH 45715 W33A	APP CRS 333°	Rwy Ldg TDZE Apt Elev	5002 485 488
--	------------------------	-----------------------------	---

RNAV (GPS) RWY 33

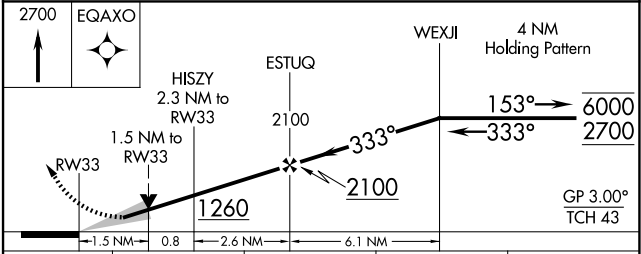
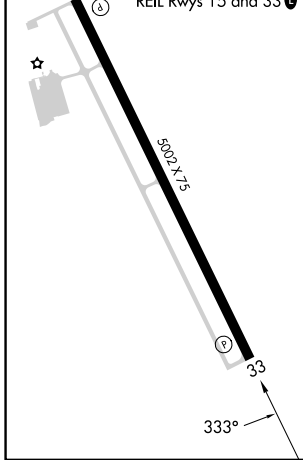
WASHINGTON RGNL (FYG)

RNP APCH-GPS. ▼ For uncompensated Baro-VNAV systems, LNAV/VNAV ▲ NA below -15°C or above 54°C.	MISSED APPROACH: Climb to 2700 direct EQAXO and hold.
--	---

AWOS-3PT 121.325	ST. LOUIS APP CON 126.5 254.3	UNICOM 122.8 (CTAF) 0
----------------------------	---	---------------------------------



ELEV 488	TDZE 485
MIRL Rwy 15-33	
REIL Rwy 15 and 33	



CATEGORY	A	B	C	D
LPV DA	823-1 338 (400-1)			NA
LNAV/VNAV DA	1050-1 5/8 565 (600-1 5/8)			NA
LNAV MDA	1000-1	515 (600-1)	1000-1 3/8 515 (600-1 3/8)	NA
CIRCLING	1220-1 732 (800-1)	1260-1 772 (800-1)	1520-3 1032 (1100-3)	NA

NC-3, 14 MAY 2026 to 11 JUN 2026

NC-3, 14 MAY 2026 to 11 JUN 2026