

WAAS CH 48932 W14A	APP CRS 140°	Rwy Idg 3205 TDZE 876 Apt Elev 876
--	------------------------	---

RNAV (GPS) RWY 14

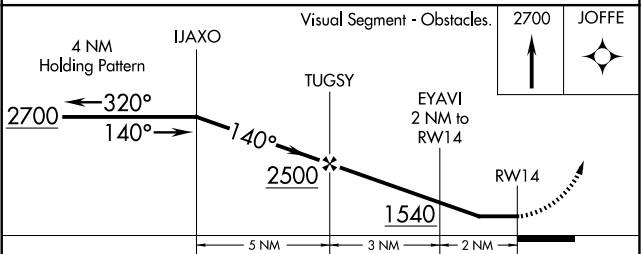
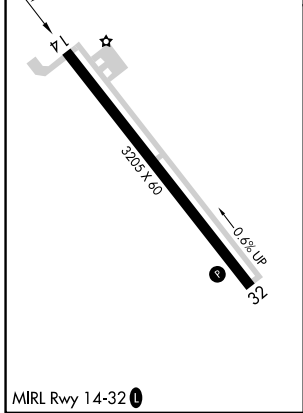
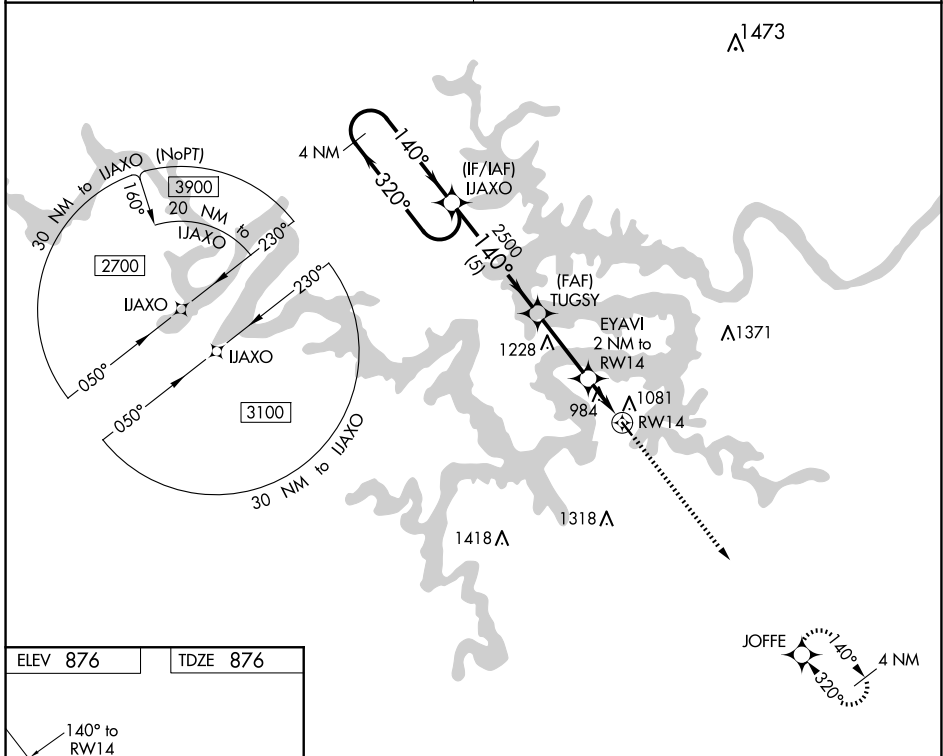
GRAND GLAIZE-OSAGE BEACH (K15)

⚠ NA Use Kaiser Lake Ozark altimeter setting; when not received, use Camdenton altimeter setting and increase all MDA 40 feet. DME/DME RNP- 0.3 NA. Procedure NA at night. Helicopter visibility reduction below 1 SM NA.

MISSED APPROACH: Climb to 2700 direct JOFFE and hold.

MIZU APP CON **124.1 353.925**

UNICOM **122.8 (CTAF) 0**



CATEGORY	A	B	C	D
LP MDA	1300-1	424 (500-1)		NA
LNAV MDA	1360-1	484 (500-1)		NA
CIRCLING	1420-1	544 (600-1)		NA

NC-3, 14 MAY 2026 to 11 JUN 2026

NC-3, 14 MAY 2026 to 11 JUN 2026