

|  |                        |   |
|--|------------------------|---|
| WAAS<br>CH <b>45803</b><br><b>W19A</b> | APP CRS<br><b>187°</b> | Rwy Ldg <b>4206</b><br>TDZE <b>795</b><br>Apt Elev <b>798</b> |
|--|------------------------|---|

# RNAV (GPS) RWY 19

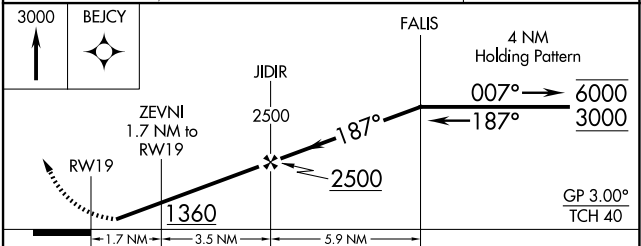
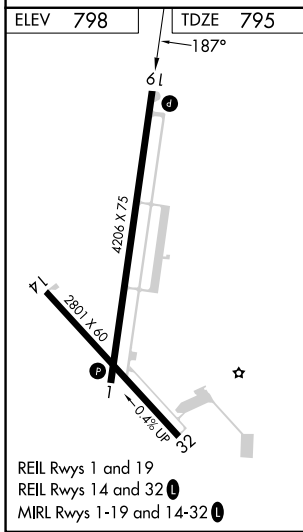
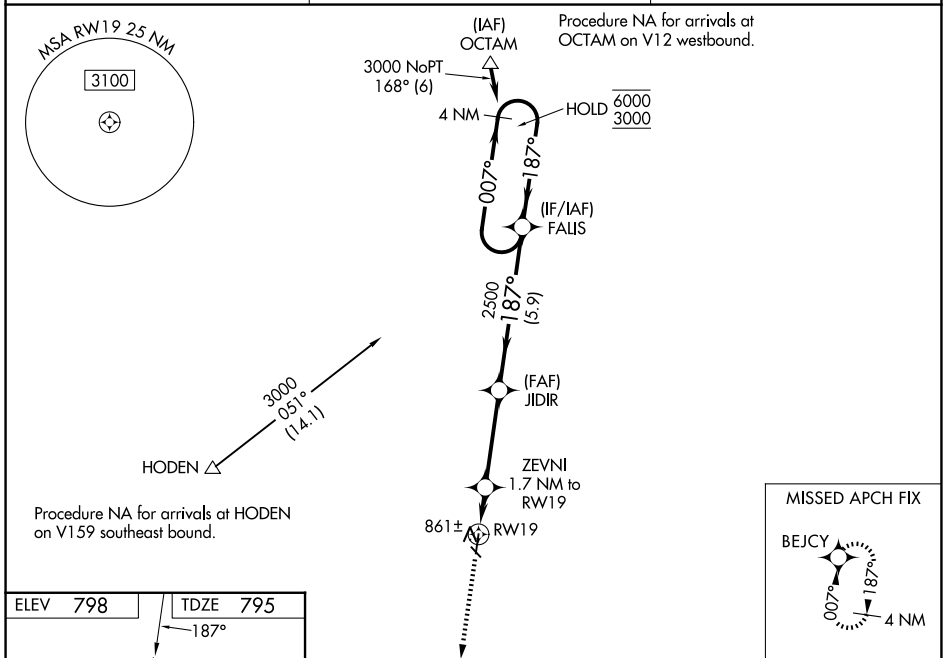
SKYHAVEN (RCM)

RNP APCH - GPS.

**⚠** Baro-VNAV NA when using SZL altimeter setting. For uncompensated Baro-VNAV systems, LNAV/VNAV NA below -16°C or above 54°C. Rwy 19 helicopter visibility reduction below ¾ SM NA. When local altimeter setting not received, use SZL altimeter setting and increase LPV DA to 1084 feet; increase LNAV/VNAV DA to 1139 feet; increase all MDAs 40 feet; and Circling visibility Cat C ½ SM.

MISSED APPROACH: Climb to 3000 direct BEJCY and hold.

|                            |   |                                 |
|----------------------------|---|---------------------------------|
| AWOS-3PT<br><b>119.575</b> | WHITEMAN APP CON *<br><b>127.45 284.0</b> | UNICOM<br><b>123.0 (CTAF) 0</b> |
|----------------------------|---|---------------------------------|



| CATEGORY     | A                     | B                     | C  | D  |
|--------------|-----------------------|-----------------------|--|----|
| LPV DA       | 1045-1                |                       | 250 (300-1)  | NA |
| LNAV/VNAV DA | 1100-1                |                       | 305 (400-1)  | NA |
| LNAV MDA     | 1240-1                | 445 (500-1)           | 1240-1 <sup>3</sup> / <sub>8</sub><br>445 (500-1 <sup>3</sup> / <sub>8</sub> ) | NA |
| CIRCLING     | 1260-1<br>462 (500-1) | 1340-1<br>542 (600-1) | 1380-1 <sup>1</sup> / <sub>2</sub><br>582 (600-1 <sup>1</sup> / <sub>2</sub> ) | NA |

NC-3, 14 MAY 2026 to 11 JUN 2026

NC-3, 14 MAY 2026 to 11 JUN 2026