

|  |                        |   |
|--|------------------------|---|
| WAAS<br>CH <b>53629</b><br><b>W01A</b> | APP CRS<br><b>009°</b> | Rwy Ldg <b>4406</b><br>TDZE <b>889</b><br>Apt Elev <b>898</b> |
|--|------------------------|---|

# RNAV (GPS) RWY 1

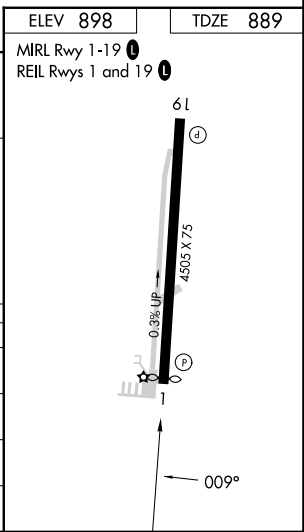
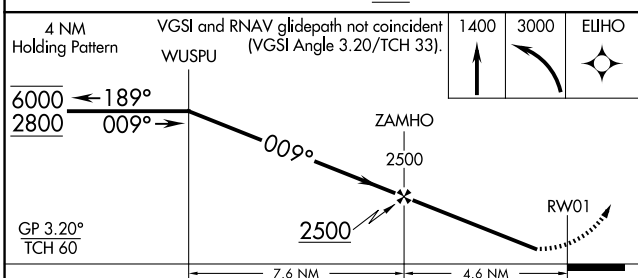
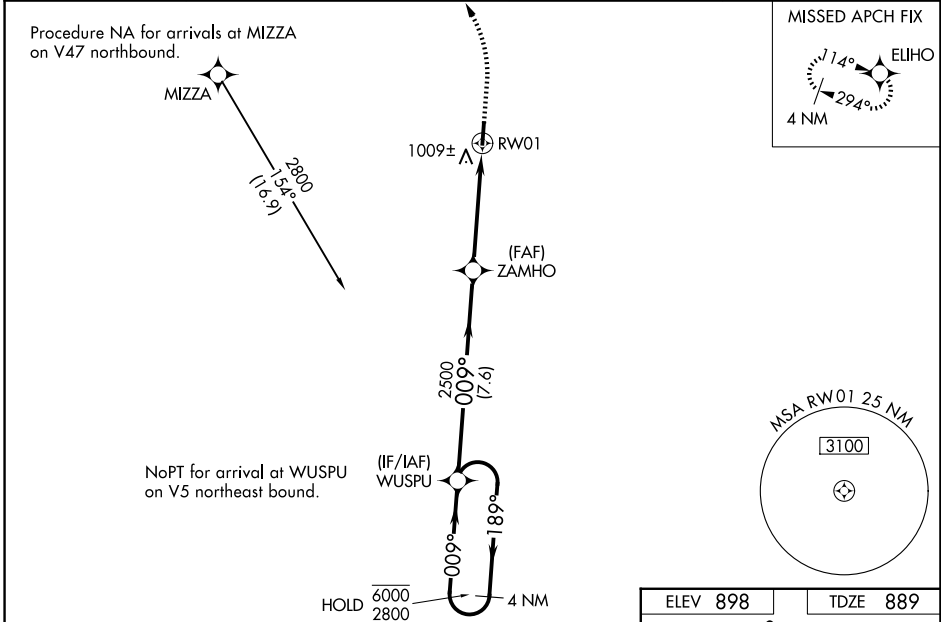
WARREN COUNTY/JOHN LANE FLD (I68)

RNP APCH - GPS.

**⚠** For uncompensated Baro-VNAV systems, LNAV/VNAV NA below -16°C or above 54°C. Baro-VNAV NA when using MGY altimeter setting. When local altimeter setting not received use MGY altimeter setting and increase LPV DA to 1179 feet and LNAV/VNAV DA to 1288 and all visibilities 1/8 SM. Increase all MDA 40 feet; increase LNAV Cat C/D visibility 1/8 SM and Circling Cat C visibility 1/4 SM. When Circling to Rwy 19 at night, operational VGSI required, remain on or above VGSI glidepath until threshold. Rwy 1 helicopter visibility reduction below 3/4 SM NA.

MISSED APPROACH: Climb to 1400 then climbing left turn to 3000 direct ELIHO and hold.

|                           |   |                          |                                   |
|---------------------------|---|--------------------------|-----------------------------------|
| AWOS-3PT<br><b>120.55</b> | COLUMBUS APP CON<br><b>118.85 269.275</b> | CLNC DEL<br><b>119.4</b> | UNICOM<br><b>123.075 (CTAF) 0</b> |
|---------------------------|---|--------------------------|-----------------------------------|



| CATEGORY     | A                     | B                     | C                       | D                     |
|--------------|-----------------------|-----------------------|-------------------------|-----------------------|
| LPV DA       | 1153-1 264 (300-1)    |                       |                         | NA                    |
| LNAV/VNAV DA | 1262-1 373 (400-1)    |                       |                         | NA                    |
| LNAV MDA     | 1260-1 371 (400-1)    |                       |                         |                       |
| CIRCLING     | 1400-1<br>502 (600-1) | 1480-1<br>582 (600-1) | 1480-1½<br>582 (600-1½) | 1500-2<br>602 (700-2) |