

WAAS CH <b>87129</b> <b>W19A</b>	APP CRS <b>189°</b>	Rwy Ldg TDZE Apt Elev	<b>4505</b> <b>898</b> <b>898</b>
--	------------------------	-----------------------------	---

# RNAV (GPS) RWY 19

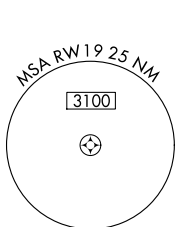
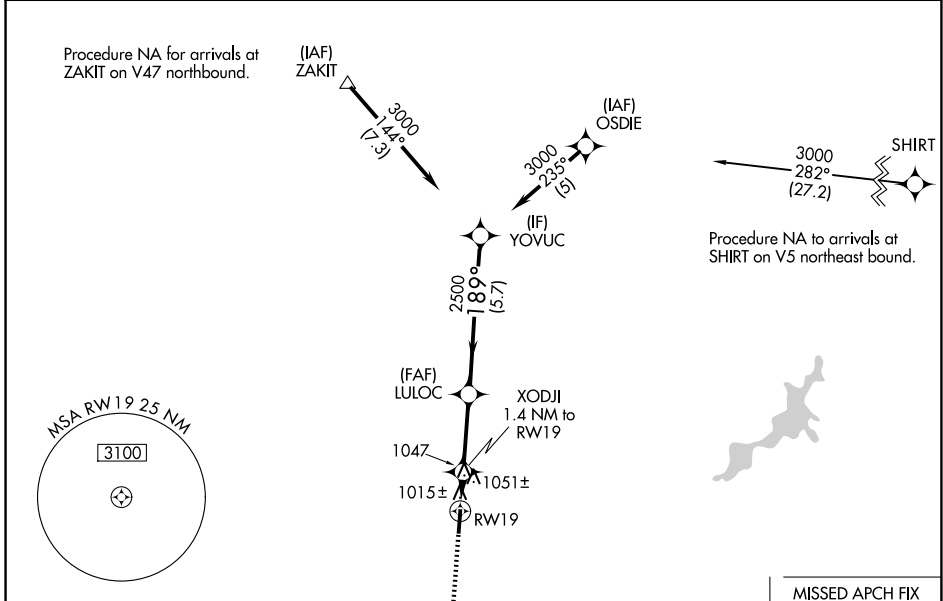
WARREN COUNTY/JOHN LANE FLD (I68)

RNP APCH.

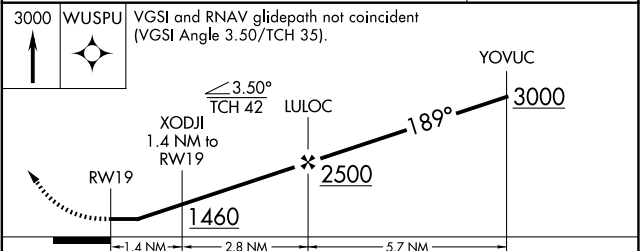
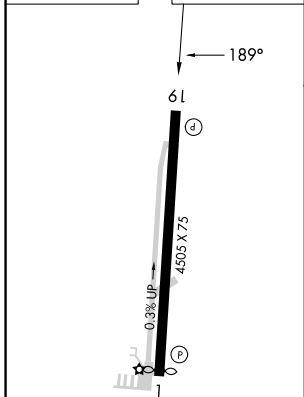
**NA** Rwy 19 helicopter visibility reduction below 1 SM NA. When local altimeter setting not received, use Dayton/Wright Brothers altimeter setting and increase all MDAs 40 feet, and LP and LNAV Cat C and D visibilities 1/8 SM and Circling Cat C visibility 1/4 SM. Straight-in Rwy 19 and Circling Rwy 19 at night, operational VGSI required, remain on or above VGSI glidepath until threshold.

MISSED APPROACH:  
Climb to 3000 direct  
WUSPU and hold.

AWOS-3PT <b>120.55</b>	COLUMBUS APP CON <b>118.85 269.275</b>	CLNC DEL <b>119.4</b>	UNICOM <b>123.075 (CTAF) 0</b>
---------------------------	---	--------------------------	-----------------------------------



ELEV 898	TDZE 898
----------	----------



CATEGORY	A	B	C	D
LP MDA	1280-1	382 (400-1)	1280-1/8	382 (400-1/8)
LNAV MDA	1320-1	422 (500-1)	1320-1/4	422 (500-1/4)
CIRCLING	1400-1 502 (600-1)	1480-1 582 (600-1)	1480-1 1/2 582 (600-1 1/2)	1480-2 582 (600-2)

MIRL Rwy 1-19  
REIL Rwy 1 and 19

EC-2, 14 MAY 2026 to 11 JUN 2026

EC-2, 14 MAY 2026 to 11 JUN 2026