

WAAS CH <b>78222</b> <b>W05A</b>	APP CRS <b>048°</b>	Rwy Ldg <b>5500</b> TDZE <b>18</b> Apt Elev <b>19</b>
--	------------------------	---

# RNAV (GPS) RWY 5

CHESAPEAKE RGNL (CPK)

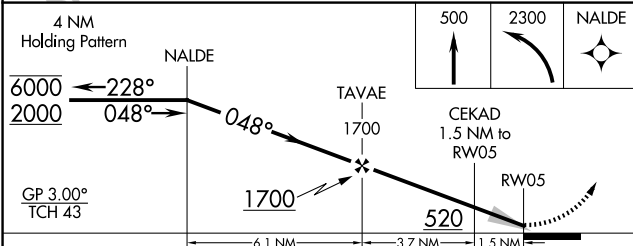
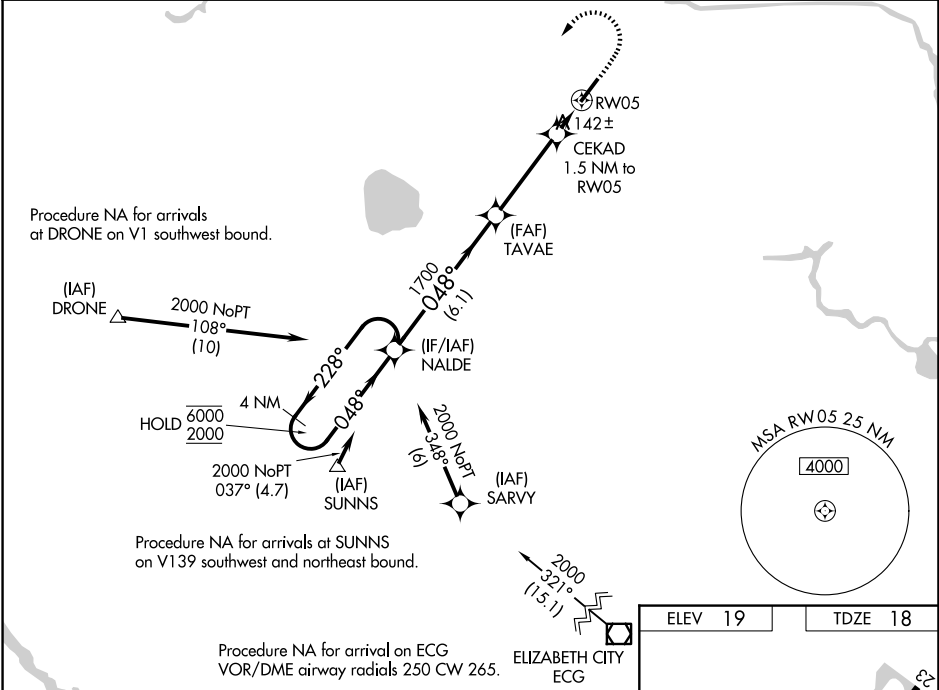
RNP APCH - GPS.

**⚠** For uncompensated Baro-VNAV systems, LNAV/VNAV NA below -15°C or above 54°C. When local altimeter setting not received, use ORF altimeter setting and increase LPV DA to 256 feet; increase LNAV/VNAV DA to 329 feet; increase all MDAs 40 feet and LNAV visibility Cat C/D ½ SM. Baro-VNAV NA when using ORF altimeter setting. For inop ALS, increase LNAV/VNAV all Cats visibility to ¾ NM.

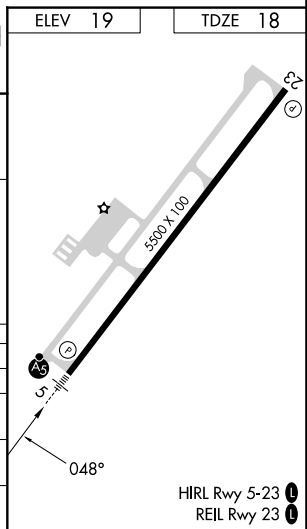


**MISSED APPROACH:**  
Climb to 500 then climbing left turn to 2300 direct NALDE and hold.

AWOS-3 <b>123.675</b>	NORFOLK APP CON <b>118.9 353.7</b>	GCO <b>135.075</b>	UNICOM <b>123.075 (CTAF) 0</b>
--------------------------	---------------------------------------	-----------------------	-----------------------------------



CATEGORY	A	B	C	D
LPV DA		218-½	200 (200-½)	
LNAV/VNAV DA		291-½	273 (300-½)	
LNAV MDA	400-½	382 (400-½)	400-⅝	382 (400-⅝)
CIRCLING	460-1 441 (500-1)	480-1 461 (500-1)	520-1½ 501 (600-1½)	580-2 561 (600-2)



NE-3, 14 MAY 2026 to 11 JUN 2026

NE-3, 14 MAY 2026 to 11 JUN 2026