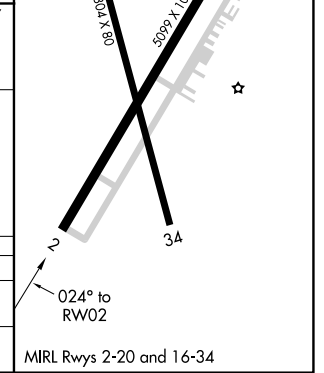
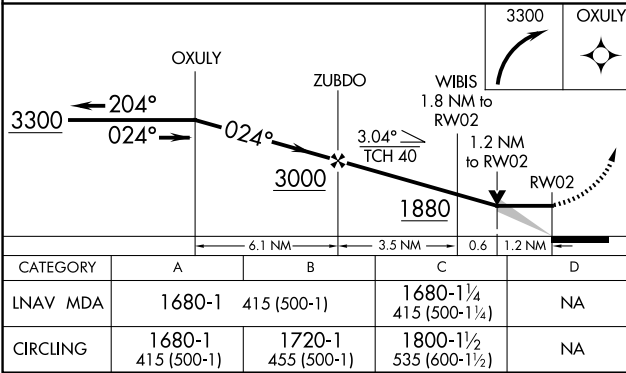
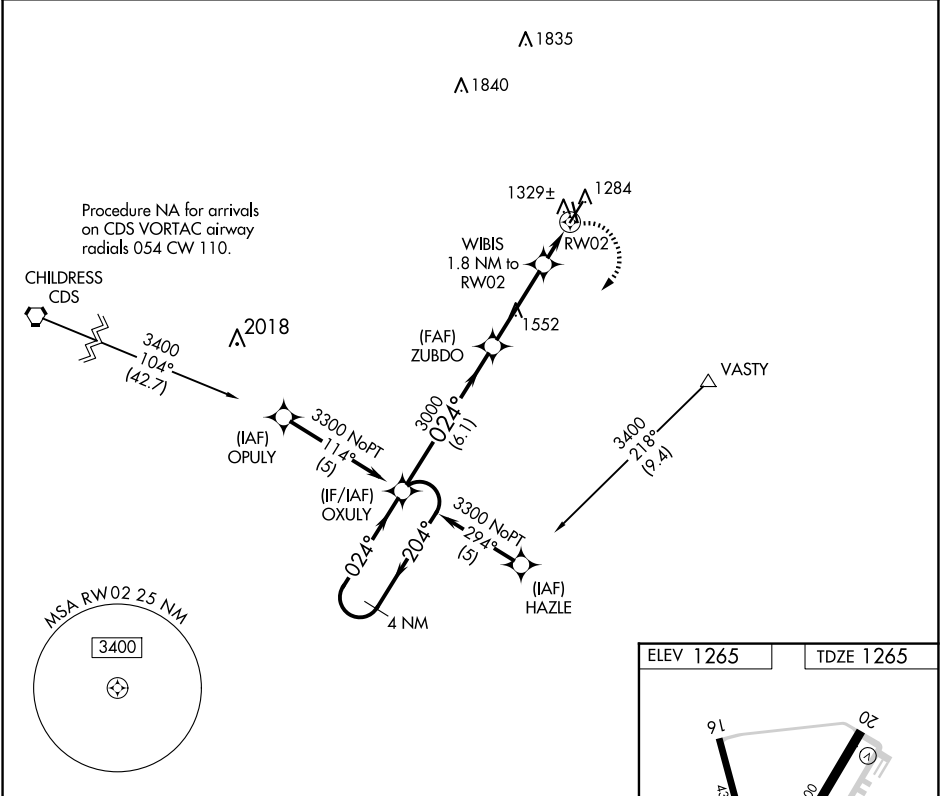


APP CRS	Rwy Idg	5099
024°	TDZE	1265
	Apt Elev	1265

RNAV (GPS) RWY 2

WILBARGER COUNTY (F05)

RNP APCH.		MISSED APPROACH: Climbing right turn to 3300 direct OXULY and hold.
AWOS-3 118.525	ALTUS APP CON* 125.1 353.7	UNICOM 122.8 (CTAF) 0



VERNON, TEXAS	WILBARGER COUNTY (F05)		
Orig-A 22APR21	RNAV (GPS) RWY 2		
	34°14'N-99°17'W		

SC-2, 14 MAY 2026 to 11 JUN 2026

SC-2, 14 MAY 2026 to 11 JUN 2026