

FTHLS SIX DEPARTURE (RNAV)

AL-6494 (FAA)

CHANDLER MUNI (CHD)
CHANDLER, ARIZONA

SW-4, 14 MAY 2026 to 11 JUN 2026

TOP ALTITUDE: ASSIGNED BY ATC

NOTE: RNAV 1.

NOTE: Turboprops and turboprops only.

NOTE: RADAR required.

NOTE: GPS required.

NOTE: ABQ transition ATC assigned only.

NOTE: Aircraft filing over ACH, LBL, ONM, CNX, PNH, MMB, TCC, IRW and TXO file FTHLS DEPARTURE.

NOTE: Aircraft filing over ABQ, CIM, FTJ, and GCK file LALUZ DEPARTURE.

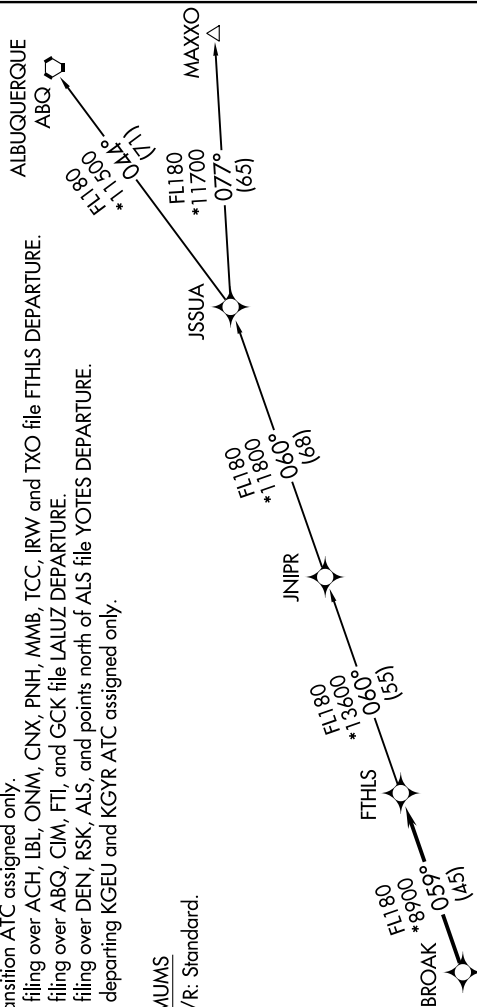
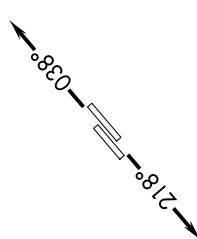
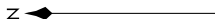
NOTE: Aircraft filing over DEN, RSK, ALS, and points north of ALS file YOTES DEPARTURE.

NOTE: Aircraft departing KGEU and KGYR ATC assigned only.

TAKEOFF MINIMUMS

Rwys 4L/R, 22L/R: Standard.

ATIS
128.325
GND CON
124.4
CHANDLER TOWER *
126.1 (Rwy 4L-22R)
133.1 (Rwy 4R-22L)
PHOENIX DEP CON
123.7 363.0



DEPARTURE ROUTE DESCRIPTION

TAKEOFF RUNWAYS 4L/R: Climb heading 038° or as assigned by ATC. Thence. . . .

TAKEOFF RUNWAYS 22L/R: Climb heading 218° or as assigned by ATC. Thence. . . .

. . . . expect RADAR vectors to BROAK, then on track 059° to FTHLS, then on (transition).
Maintain ATC assigned altitude, expect filed altitude 3 minutes after departure.

ALBUQUERQUE TRANSITION (FTHLS6.ABQ)

JNIPR TRANSITION (FTHLS6.JNIPR)

MAXXO TRANSITION (FTHLS6.MAXXO)

NOTE: Chart not to scale.

FTHLS SIX DEPARTURE (RNAV)

SW-4, 14 MAY 2026 to 11 JUN 2026