

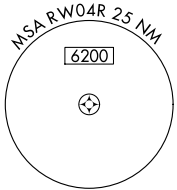
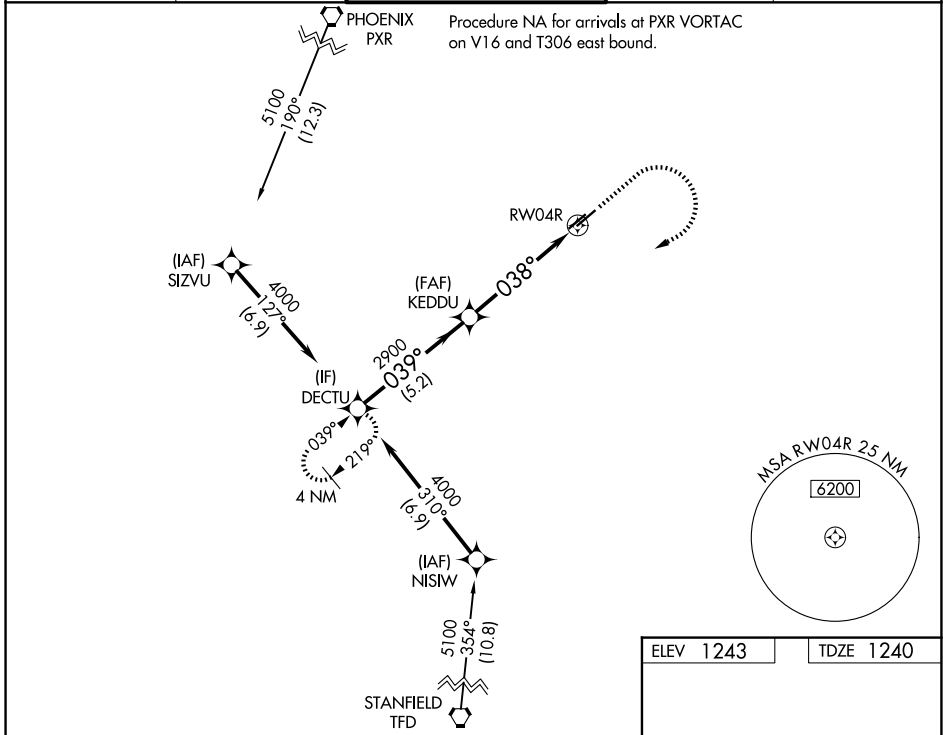
WAAS CH <b>93544</b> <b>W04A</b>	APP CRS <b>038°</b>	Rwy Ldg TDZE <b>1240</b> Apt Elev <b>1243</b>	<b>4870</b>
--	------------------------	---	-------------

# RNAV (GPS) RWY 4R

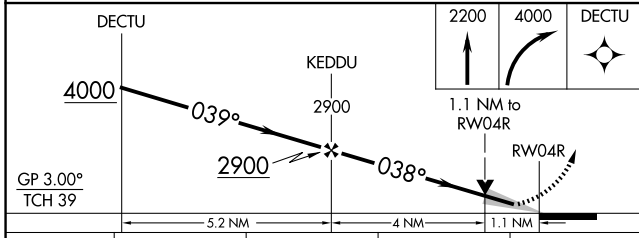
CHANDLER MUNI (CHD)

RNP APCH - GPS.	MISSED APPROACH: (Do not exceed 210K until DECTU) Climb to 2200 then climbing right turn to 4000 direct to DECTU and hold.
▼ For uncompensated Baro-VNAV systems, LNAV/VNAV NA below -17°C or above 54°C.	

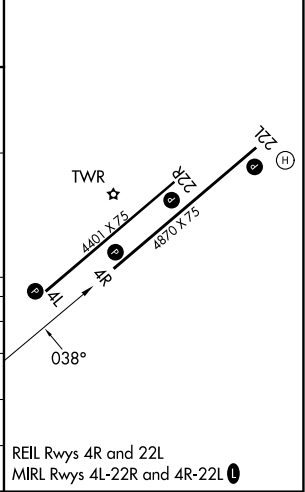
ATIS <b>128.325</b>	PHOENIX APP CON <b>123.7 363.0</b>	CHANDLER TOWER ★ <b>126.1</b> (CTAF) (N and W) <b>133.1</b> (S and E)	GND CON <b>124.4</b>	UNICOM <b>122.95</b>
------------------------	---------------------------------------	---	-------------------------	-------------------------



ELEV 1243	TDZE 1240
-----------	-----------



CATEGORY	A	B	C	D
LPV DA	1490-3/4	250 (300-3/4)		NA
LNAV/VNAV DA	1640-1 1/8	400 (400-1 1/8)		NA
LNAV MDA	1640-1	400 (400-1)	1640-1 1/8 400 (400-1 1/8)	NA
CIRCLING	1700-1 457 (500-1)	1760-1 517 (600-1)	1760-1 1/2 517 (600-1 1/2)	NA



SW-4, 14 MAY 2026 to 11 JUN 2026

SW-4, 14 MAY 2026 to 11 JUN 2026