

RNAV 1 - DME/DME/IRU or GPS required.
RADAR required.

LONE STAR DEP CON
135.975 379.9
CTAF
122.7

(BOTCH2.BOTCH) 26134
BOTCH TWO DEPARTURE (RNAV)

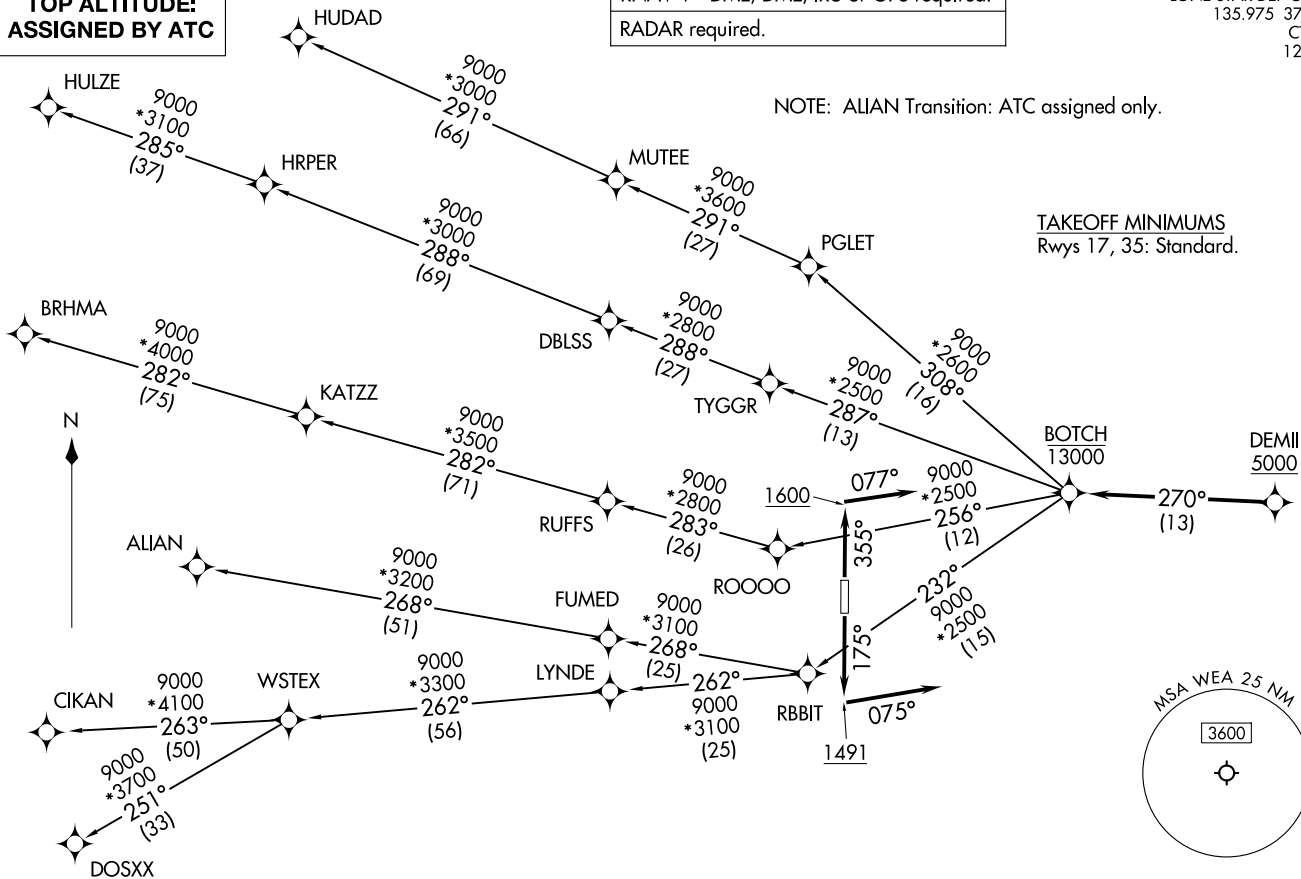
AL-6497 (FAA)

PARKER COUNTY (WEA)
WEATHERFORD, TEXAS

**TOP ALTITUDE:
ASSIGNED BY ATC**

NOTE: ALIAN Transition: ATC assigned only.

TAKEOFF MINIMUMS
Rwys 17, 35: Standard.



(CONTINUED ON FOLLOWING PAGE)

NOTE: Chart not to scale.

BOTCH TWO DEPARTURE (RNAV)
(BOTCH2.BOTCH) 14MAY26

WEATHERFORD, TEXAS
PARKER COUNTY (WEA)

BOTCH TWO DEPARTURE (RNAV)



DEPARTURE ROUTE DESCRIPTION

TAKEOFF RUNWAY 17: Climb on heading 175° to 1491, then on heading 075° or as assigned by ATC, for vectors to cross DEMIL at or above 5000, thence. . .

TAKEOFF RUNWAY 35: Climb on heading 355° to 1600, then on heading 077° or as assigned by ATC, for vectors to cross DEMIL at or above 5000, thence. . .

. . . on track 270° to cross BOTCH at or below 13000, then on (transition). Maintain ATC assigned altitude, expect filed altitude 10 minutes after departure.

ALIAN TRANSITION (BOTCH2.ALIAN)

BRHMA TRANSITION (BOTCH2.BRHMA)

CIKAN TRANSITION (BOTCH2.CIKAN)

DOSXX TRANSITION (BOTCH2.DOSXX)

HUDAD TRANSITION (BOTCH2.HUDAD)

HULZE TRANSITION (BOTCH2.HULZE)

WSTEX TRANSITION (BOTCH2.WSTEX)

SC-2, 14 MAY 2026 to 11 JUN 2026

SC-2, 14 MAY 2026 to 11 JUN 2026