

GARLAND SIX DEPARTURE
(GARL6.TT) 17 APR 25

PARKER COUNTY (WEA)
WEATHERFORD, TEXAS

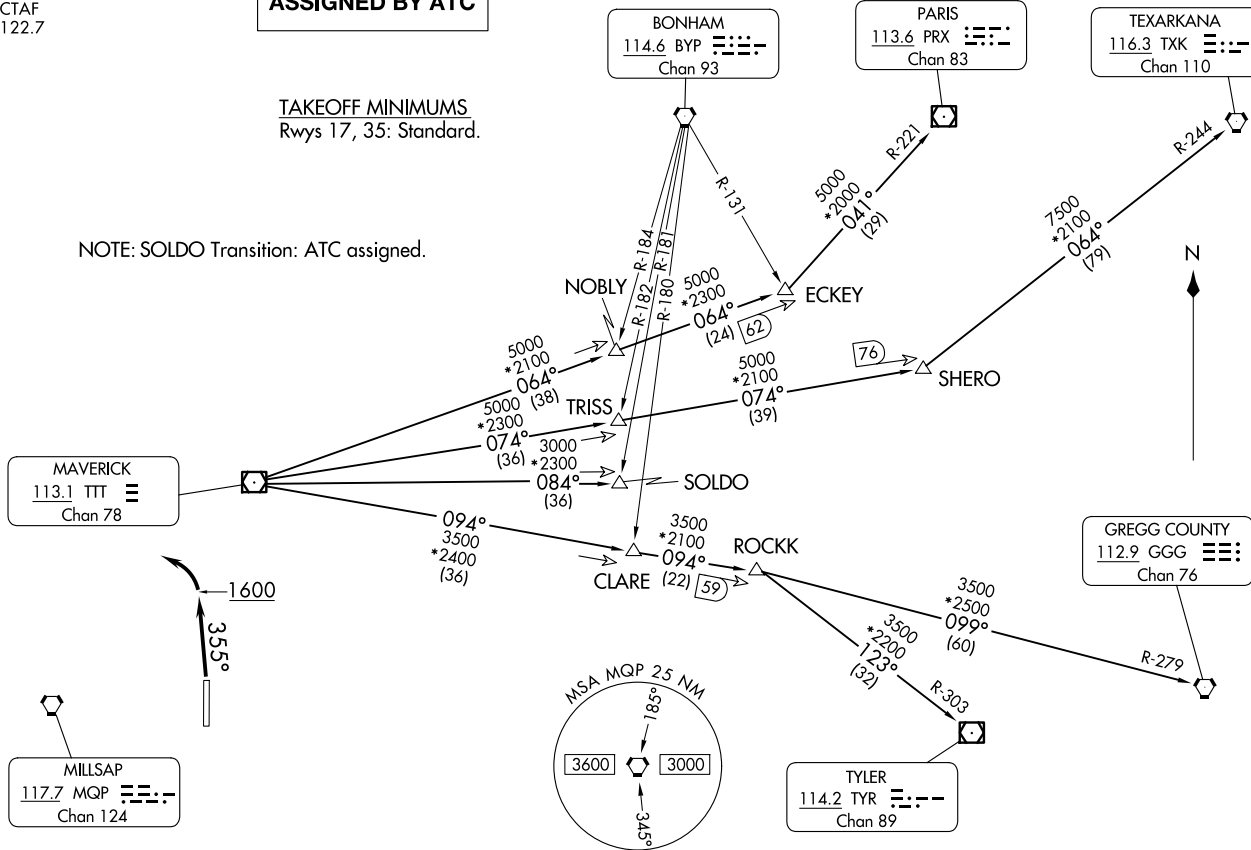
LONE STAR DEP CON
125.8 257.95
CTAF
122.7

**TOP ALTITUDE:
ASSIGNED BY ATC**

TAKEOFF MINIMUMS
Rwys 17, 35: Standard.

NOTE: SOLDO Transition: ATC assigned.

RADAR and DME required.



NOTE: Chart not to scale.

(CONTINUED ON FOLLOWING PAGE)

(GARL6.TT) 25107
GARLAND SIX DEPARTURE

AL-6497 (FAA)

PARKER COUNTY (WEA)
WEATHERFORD, TEXAS

GARLAND SIX DEPARTURE



DEPARTURE ROUTE DESCRIPTION

TAKEOFF RUNWAY 35: Climb on heading 355° to 1600 before turning left.

When entering controlled airspace, fly assigned heading for RADAR vectors to appropriate route. Maintain ATC assigned altitude.

GREGG COUNTY TRANSITION (GARL6.GGG): From over TTT VOR/DME on TTT R-094 to ROCKK, then on GGG R-279 to GGG VORTAC.

PARIS TRANSITION (GARL6.PRX): From over TTT VOR/DME on TTT R-064 to ECKEY, then on PRX R-221 to PRX VOR/DME.

SOLDO TRANSITION (GARL6.SOLDO): From over TTT VOR/DME on TTT R-084 to SOLDO.

TEXARKANA TRANSITION (GARL6.TXK): From over TTT VOR/DME on TTT R-074 to SHERO, then on TXK R-244 to TXK VORTAC.

TYLER TRANSITION (GARL6.TYR): From over TTT VOR/DME on TTT R-094 to ROCKK, then on TYR R-303 to TYR VOR/DME.

SC-2, 14 MAY 2026 to 11 JUN 2026

SC-2, 14 MAY 2026 to 11 JUN 2026