

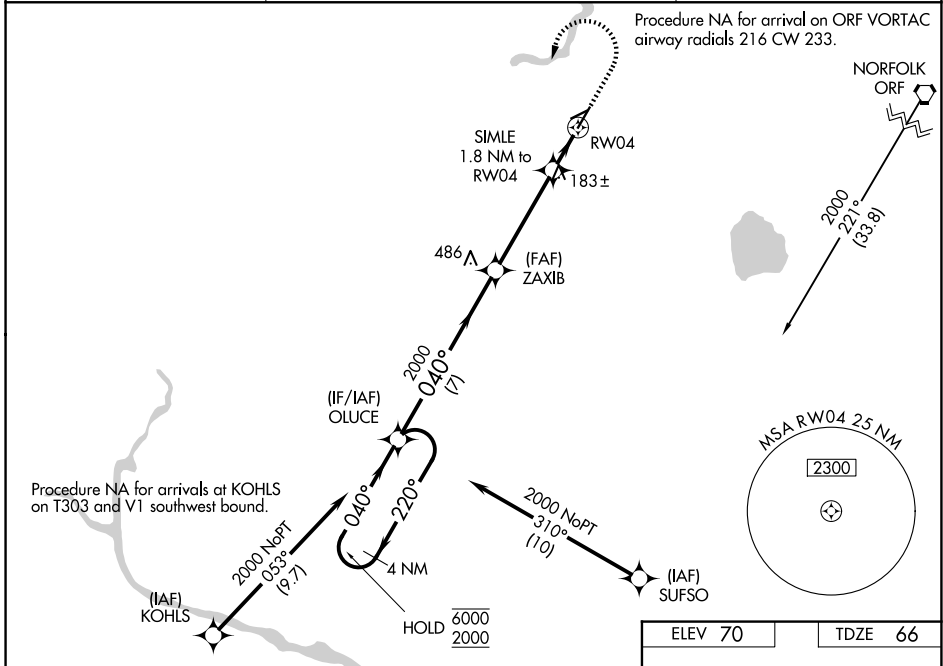
WAAS CH 65824 W04A	APP CRS 040°	Rwy Ldg TDZE 66 Apt Elev 70	5007
--	------------------------	---	-------------

RNAV (GPS) RWY 4

SUFFOLK EXEC (SF'Q)

RNP APCH - GPS.	MISSED APPROACH: Climb to 600 then climbing left turn to 2000 direct OLUCE and hold.
<p>⚠ Rwy 4 helicopter visibility reduction below 3/4 SM NA. For uncompensated Baro-VNAV systems, LNAV/VNAV NA below -1.5°C or above 54°C.</p>	

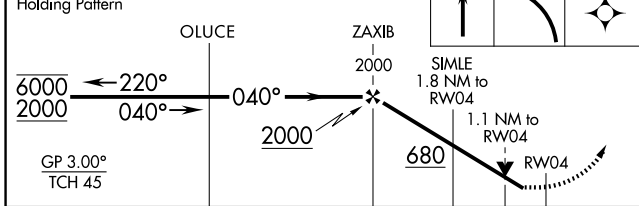
AWOS-3 119.375	NORFOLK APP CON 127.9 269.425	UNICOM 122.7 (CTAF) 0
--------------------------	---	--



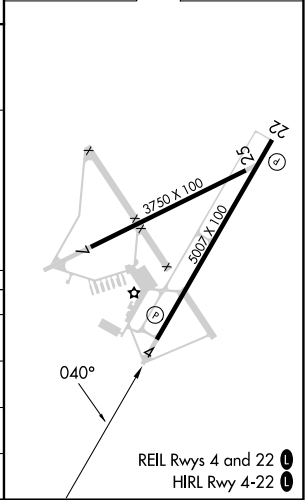
NE-3, 14 MAY 2026 to 11 JUN 2026

NE-3, 14 MAY 2026 to 11 JUN 2026

4 NM Holding Pattern VGSi and RNAV glidepath not coincident (VGSi Angle 3.00/TCH 39).



ELEV 70	TDZE 66
---------	---------



CATEGORY	A	B	C	D
LPV DA		281-3/4	215 (300-3/4)	
LNAV/VNAV DA		457-1 1/8	391 (400-1 1/8)	
LNAV MDA		440-1	374 (400-1)	
CIRCLING	500-1 430 (500-1)	560-1 490 (500-1)	680-1 3/4 610 (700-1 3/4)	680-2 610 (700-2)