

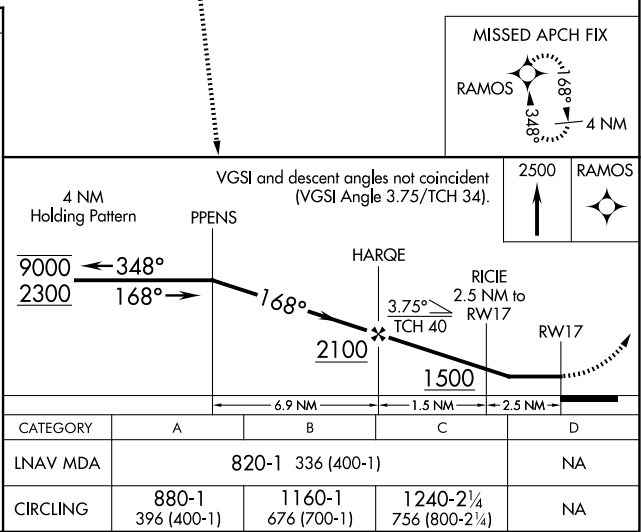
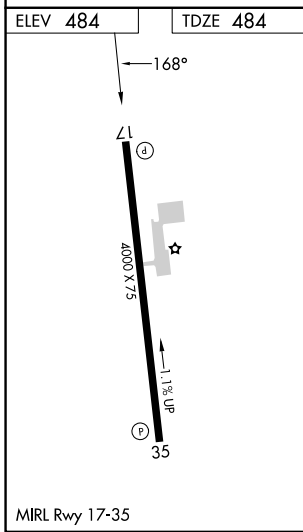
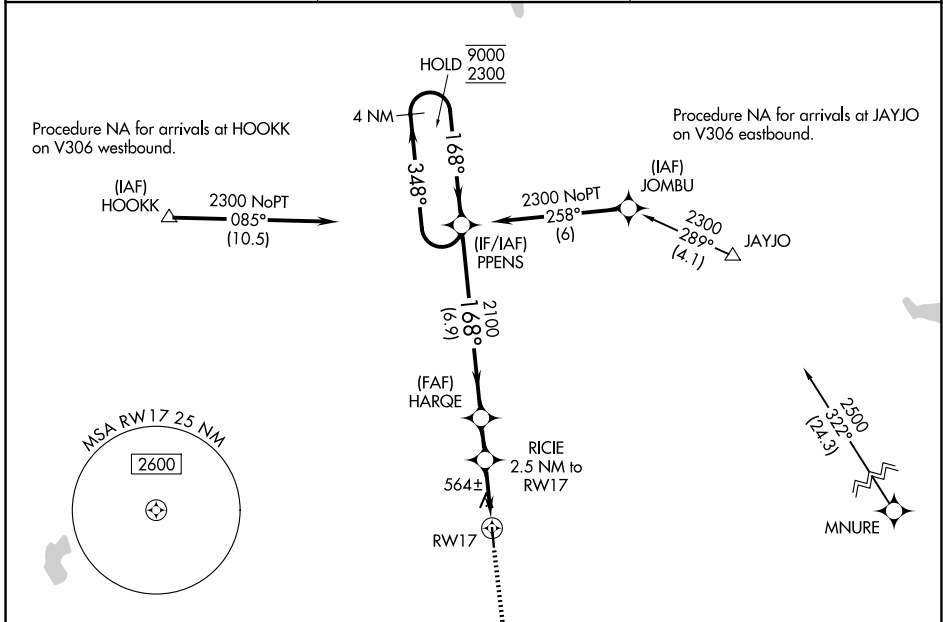
APP CRS 168°	Rwy Ldg 4000
	TDZE 484
	Apt Elev 484

RNAV (GPS) RWY 17

GIDDINGS-LEE COUNTY (GYB)

RNP APCH - GPS.	<p>Procedure NA at night. Rwy 17 helicopter visibility reduction below 1 SM NA. When local altimeter setting not received, use AUS altimeter setting and increase all MDAs 100 feet and LNAV visibility Cat C ¼ SM, and Circling visibility Cat C ¼ SM.</p>	<p>MISSED APPROACH: Climb to 2500 direct RAMOS and hold.</p>
-----------------	---	--

AWOS-3 119.225	AUSTIN APP CON 127.225 317.65	UNICOM 123.05 (CTAF)
--------------------------	---	--------------------------------



SC-5, 14 MAY 2026 to 11 JUN 2026

SC-5, 14 MAY 2026 to 11 JUN 2026