

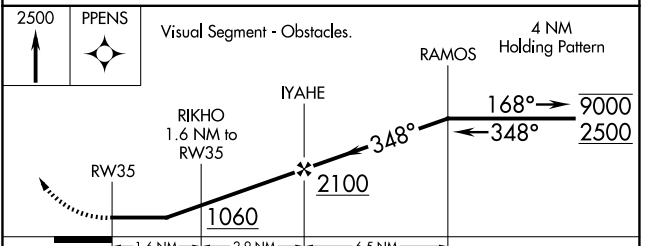
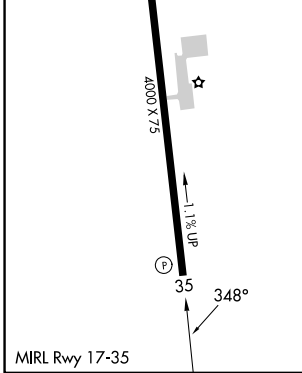
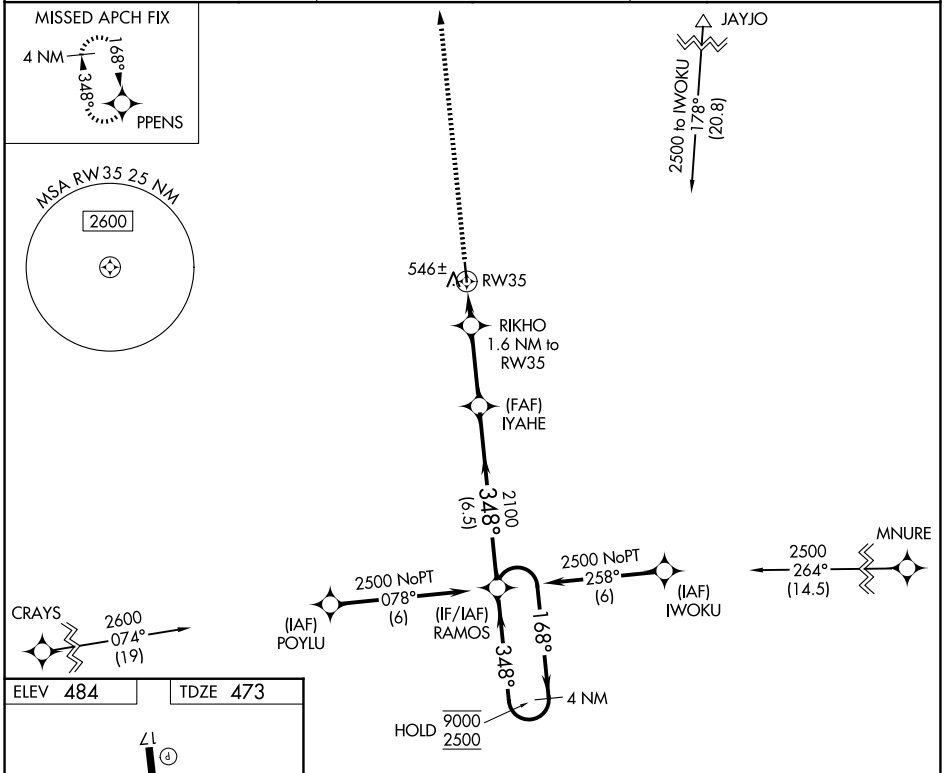
APP CRS	Rwy Ldg	4000
348°	TDZE	473
	Apt Elev	484

RNAV (GPS) RWY 35

GIDDINGS-LEE COUNTY (GYB)

RNP APCH - GPS.		MISSED APPROACH: Climb to 2500 direct PPENS and hold.
<p>▼ Rwy 35 helicopter visibility reduction below 1 SM NA. Procedure NA at night.</p> <p>▲ When local altimeter setting not received, use AUS altimeter setting and increase all MDAs 100 feet and LNAV visibility Cat C ¼ SM, and Circling visibility Cat C ¼ SM.</p>		

AWOS-3 119.225	AUSTIN APP CON 127.225 317.65	UNICOM 123.05 (CTAF)
--------------------------	---	--------------------------------



CATEGORY	A	B	C	D
LNAV MDA	800-1 327 (400-1)			NA
CIRCLING	880-1 396 (400-1)	1160-1 676 (700-1)	1240-2¼ 756 (800-2¼)	NA

SC-5, 14 MAY 2026 to 11 JUN 2026

SC-5, 14 MAY 2026 to 11 JUN 2026