

# COPTER RNAV (GPS) X RWY 31

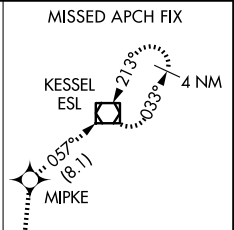
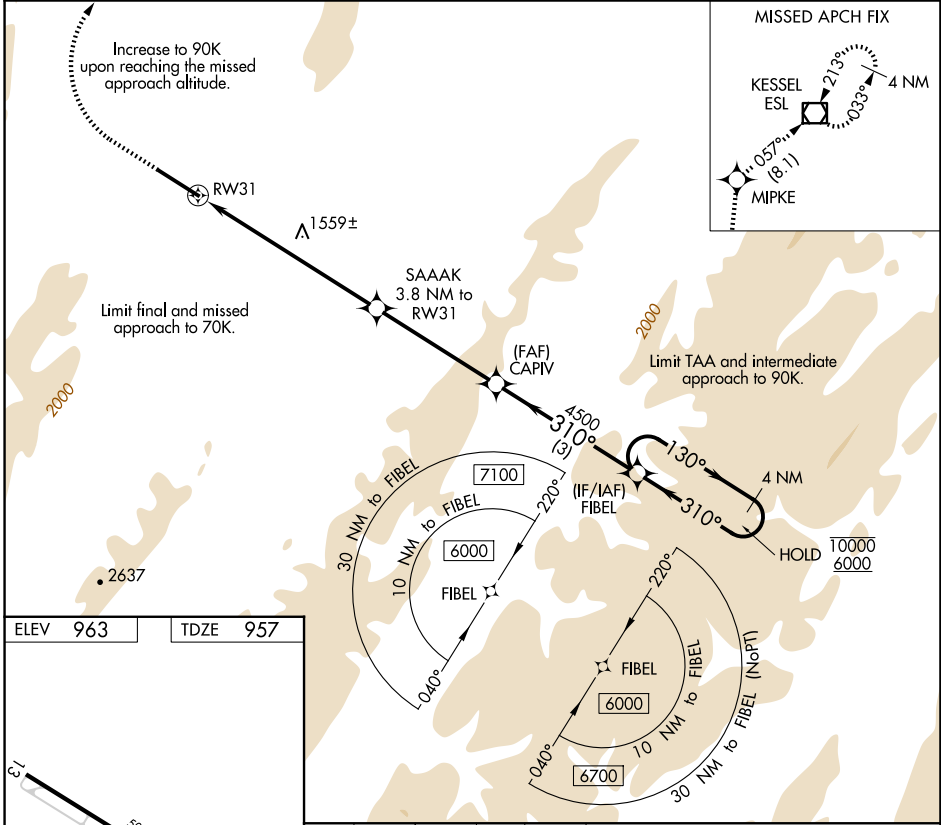
GRANT COUNTY (W99)

APP CRS	Rwy Ldg	<b>5000</b>
<b>310°</b>	TDZE	<b>957</b>
	Apt Elev	<b>963</b>

RNP APCH.	
▼	
▲ NA	When local altimeter setting not received, procedure NA.
☒	-7°C

MISSED APPROACH: Climb to 1380 then climbing right turn to 5000 direct MIPKE and on track 057° to ESL VOR/DME and hold.

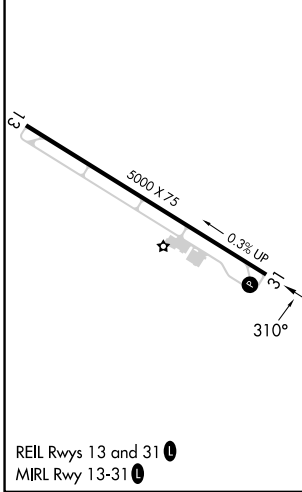
AWOS-3 <b>124.475</b>	WASHINGTON CENTER <b>133.55 322.55</b>	UNICOM <b>122.8 (CTAF)</b>
--------------------------	---	-------------------------------



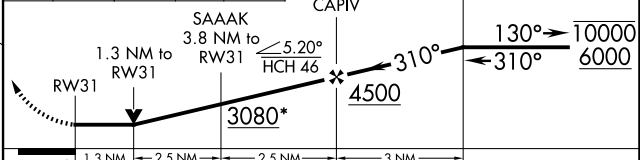
NE-4, 14 MAY 2026 to 11 JUN 2026

NE-4, 14 MAY 2026 to 11 JUN 2026

ELEV	963	TDZE	957
------	-----	------	-----



1380	5000	MIPKE	tr 057°	ESL	VGSI and descent angles not coincident (VGSI Angle 6.50/TCH 46).
					FIBEL 4 NM Holding Pattern



CATEGORY	COPTER	
LNAV MDA	1880- <sup>3</sup> / <sub>4</sub>	923 (1000- <sup>3</sup> / <sub>4</sub> )

# COPTER RNAV (GPS) X RWY 31