

WAAS CH <b>58131</b> <b>W31A</b>	APP CRS <b>295°</b>	Rwy Ldg TDZE Apt Elev	<b>5000</b> <b>957</b> <b>963</b>
--	------------------------	-----------------------------	---

# RNAV (GPS) Y RWY 31

GRANT COUNTY (W99)

RNP APCH-GPS.

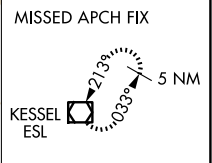
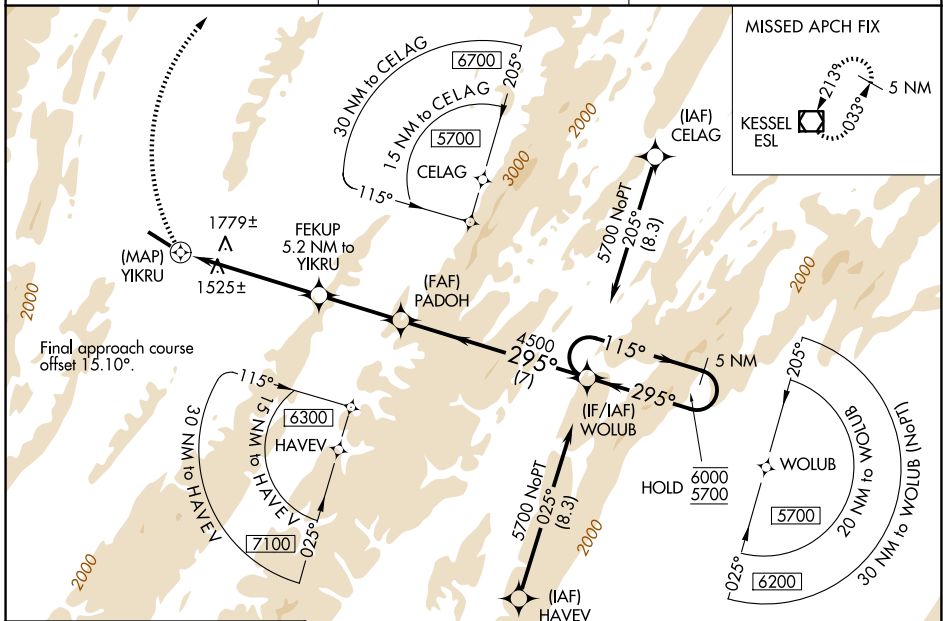
Rwy 31 helicopter visibility reduction below 3/4 SM NA.  
 -7°C  
 When local altimeter setting not received, procedure NA.

MISSED APPROACH: Climbing right turn to 5000 direct ESL VOR/DME and hold.

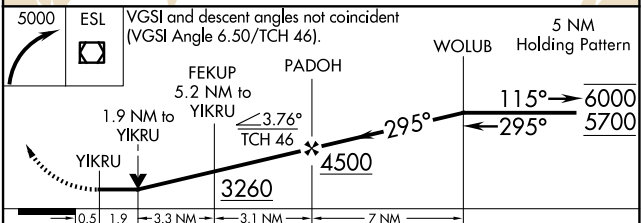
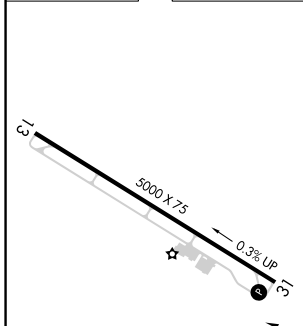
AWOS-3  
**124.475**

WASHINGTON CENTER  
**133.55 322.55**

UNICOM  
**122.8 (CTAF)**



ELEV 963	TDZE 957
----------	----------



CATEGORY	A	B	C	D
LP MDA	2620-1¼ 1663 (1700-1¼)	2620-1½ 1663 (1700-1½)		NA
LNAV MDA	2740-1¼ 1783 (1800-1¼)	2740-1½ 1783 (1800-1½)		NA
CIRCLING	2740-1¼ 1777 (1800-1¼)	2740-1½ 1777 (1800-1½)		NA

REIL Rwy 13 and 31   
 MIRL Rwy 13-31

NE-4, 14 MAY 2026 to 11 JUN 2026

NE-4, 14 MAY 2026 to 11 JUN 2026