

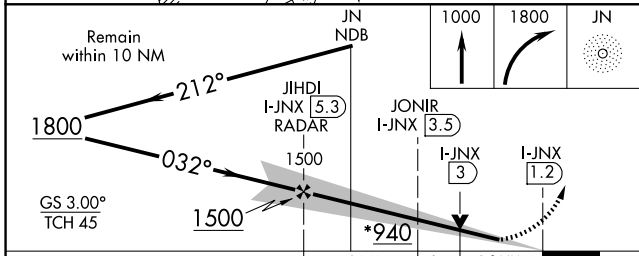
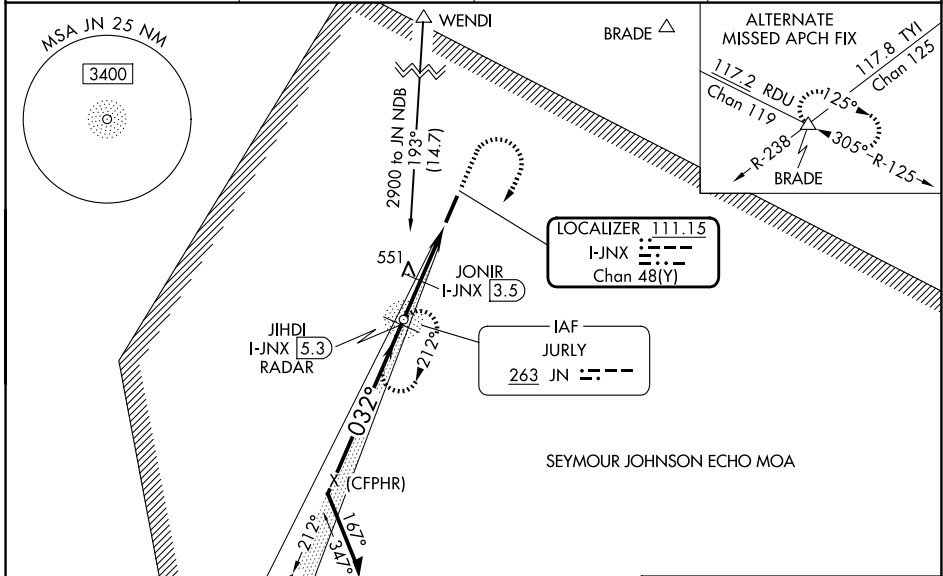
|  |                        |   |
|--|------------------------|---|
| LOC/DME I-JNX<br><b>111.15</b><br>Chan 48(Y) | APP CRS<br><b>032°</b> | Rwy Ldg <b>5500</b><br>TDZE <b>147</b><br>Apt Elev <b>164</b> |
|--|------------------------|---|

# ILS Z or LOC Z RWY 3

JOHNSTON RGNL (JNX)

|   |           |  |
|---|-----------|--|
| ADF required. DME or RADAR required for LOC only.   | MALSR<br> | MISSED APPROACH:<br>Climb to 1000 then climbing right turn to 1800 direct JN NDB and hold, continue climb-in-hold to 1800. |
| <p><b>NA</b> Rwy 3 helicopter visibility reduction below 3/4 SM NA. Inop table does not apply to S-ILS 3. For inop ALS, increase S-LOC 3 Cats C/D visibility to 2 1/2 ; increase S-LOC 3 JONIR Fix Minimums Cats C and D to 1 3/4 SM. When local altimeter setting not received, use HRJ altimeter setting and increase S-ILS 3 DA to 447 feet; increase all MDAs 60 feet and Circling visibility Cat A/C 1/4 SM. *1000 when using HRJ altimeter setting.</p> |           |  |

|                          |   |                       |                                 |
|--------------------------|---|-----------------------|---------------------------------|
| AWOS-3<br><b>120.225</b> | RALEIGH APP CON<br><b>125.3 353.675</b> | GCO<br><b>135.075</b> | UNICOM<br><b>122.725 (CTAF)</b> |
|--------------------------|---|-----------------------|---------------------------------|



|                   |                          |
|-------------------|--------------------------|
| ELEV 164          | TDZE 147                 |
|                   |                          |
| MIRL Rwy 3-21     |                          |
| REIL Rwy 21       |                          |
| FAF to MAP 4.1 NM |                          |
| Knots             | 60 90 120 150 180        |
| Min:Sec           | 4:06 2:44 2:03 1:38 1:22 |

| CATEGORY               | A                    | B                            | C                            | D                      |
|------------------------|----------------------|------------------------------|------------------------------|------------------------|
| S-ILS 3                |                      | 397-1                        | 250 (300-1)                  |                        |
| S-LOC 3*               | 940-1                | 793 (800-1)                  | 940-1 3/4                    | 793 (800-1 3/4)        |
| CIRCLING               | 940-1<br>776 (800-1) | 940-1 1/4<br>776 (800-1 1/4) | 960-2 1/2<br>796 (800-2 1/2) | 1100-3<br>936 (1000-3) |
| JONIR DME FIX MINIMUMS |                      |                              |                              |                        |
| S-LOC 3                | 780-1                | 633 (700-1)                  | 780-1 3/8                    | 633 (700-1 3/8)        |
| CIRCLING               | 780-1                | 616 (700-1)                  | 960-2 1/4<br>796 (800-2 1/4) | 1100-3<br>936 (1000-3) |

SE-2, 14 MAY 2026 to 11 JUN 2026

SE-2, 14 MAY 2026 to 11 JUN 2026