

WAAS CH <b>48819</b> <b>W03A</b>	APP CRS <b>032°</b>	Rwy Ldg TDZE <b>147</b> Apt Elev <b>164</b>
----------------------------------------	------------------------	---------------------------------------------------

# RNAV (GPS) RWY 3

JOHNSTON RGNL (JNX)

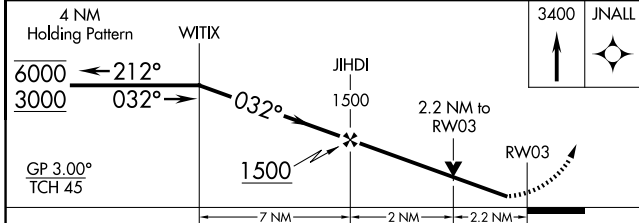
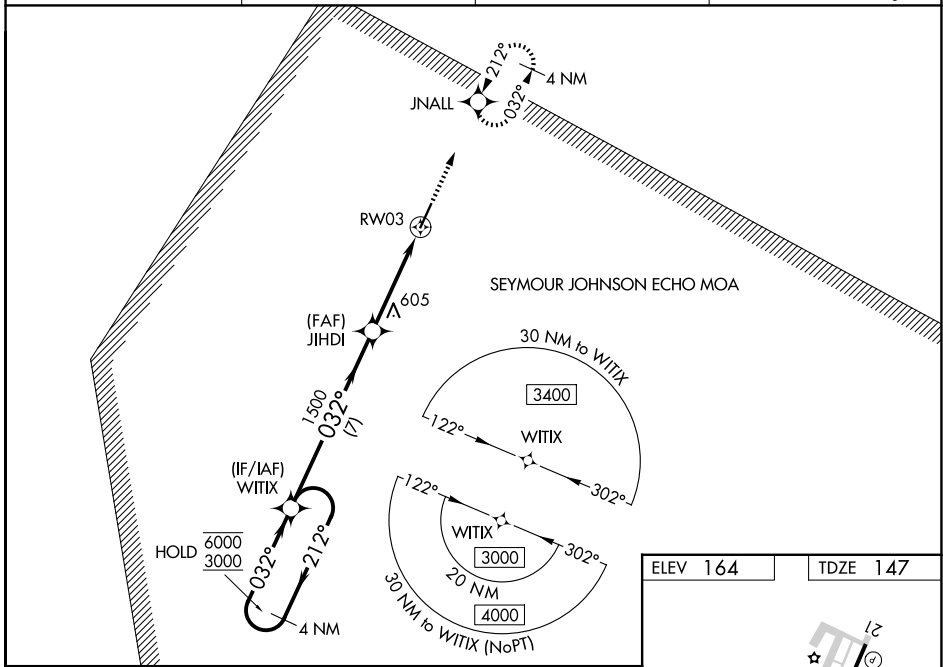
RNP APCH - GPS.

**⚠** Rwy 3 helicopter visibility reduction below 3/4 SM NA. For uncompensated Baro-VNAV systems, LNAV/VNAV NA below -15°C or above 54°C. Baro-VNAV and VDP NA when using HRJ altimeter setting. When local altimeter setting not received, use HRJ altimeter setting and increase LPV DA to 447 feet; increase LNAV/VNAV DA to 930 feet and all visibilities 1/2 SM. Increase all MDAs 60 feet and Circling visibility Cat B/C 1/4 SM.

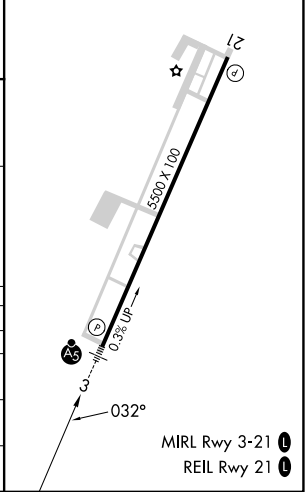
**MALSR**

**MISSED APPROACH:** Climb to 3400 direct JNALL and hold, continue climb-in-hold to 3400.

AWOS-3 <b>120.225</b>	RALEIGH APP CON <b>125.3 353.675</b>	GCO <b>135.075</b>	UNICOM <b>122.725 (CTAF)</b>
--------------------------	-----------------------------------------	-----------------------	---------------------------------



ELEV 164	TDZE 147
----------	----------



CATEGORY	A	B	C	D
LPV DA		397-1	250 (300-1)	
LNAV/VNAV DA		880-1 5/8	733 (800-1 5/8)	
LNAV MDA	880-1	733 (800-1)	880-1 5/8	733 (800-1 5/8)
CIRCLING	880-1	716 (800-1)	960-2 1/4 796 (800-2 1/4)	1100-3 936 (1000-3)

MIRL Rwy 3-21 **1**  
REIL Rwy 21 **1**

SE-2, 14 MAY 2026 to 11 JUN 2026

SE-2, 14 MAY 2026 to 11 JUN 2026