

WAAS CH <b>86331</b> <b>W13A</b>	APP CRS <b>130°</b>	Rwy Ldg TDZE Apt Elev	<b>3402</b> <b>1073</b> <b>1073</b>
--	------------------------	-----------------------------	---

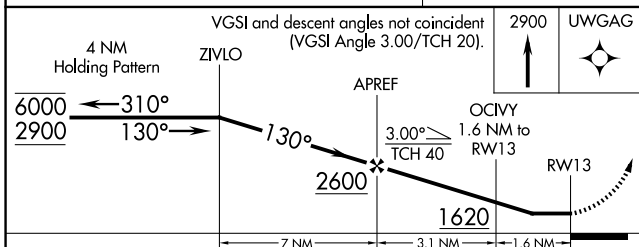
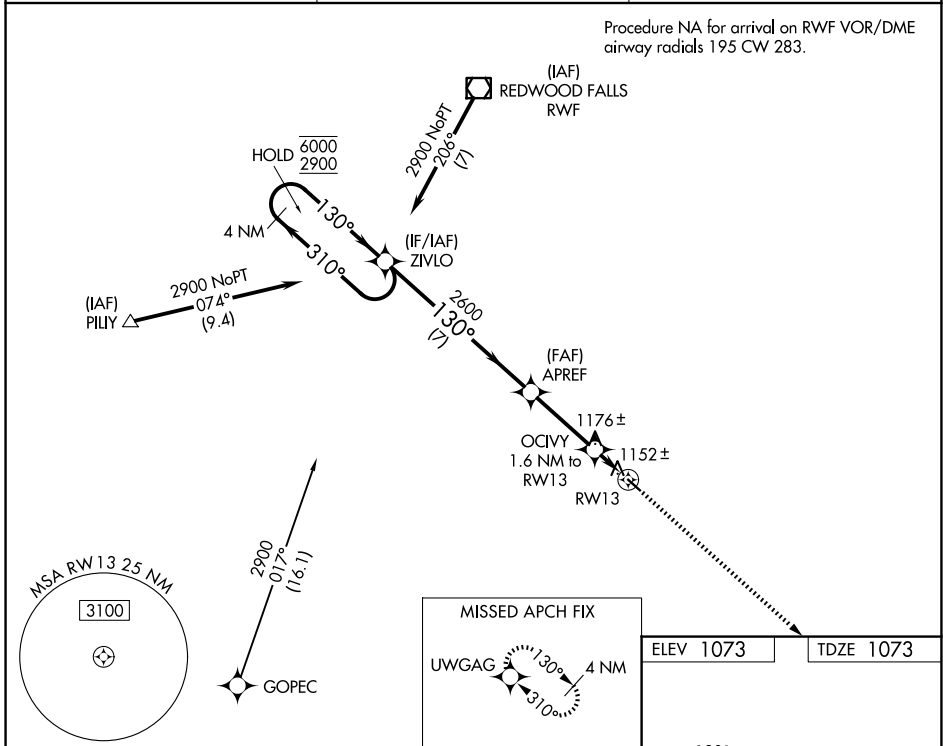
# RNAV (GPS) RWY 13

SPRINGFIELD MUNI (D42)

RNP APCH.	MISSED APPROACH: Climb to 2900 direct UWGAG and hold.
<p>▼ Rwy 13 helicopter visibility reduction below ¼ SM NA.</p> <p>▲ NA Use Redwood Falls altimeter setting.</p>	

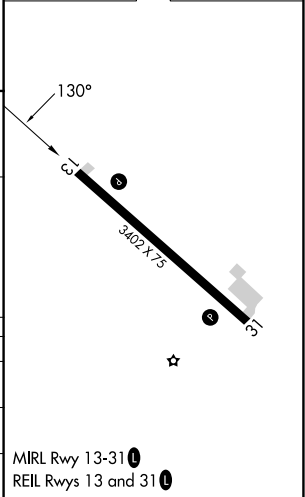
RWF ASOS <b>126.575</b>	MINNEAPOLIS CENTER <b>127.1 290.2</b>	UNICOM <b>122.8 (CTAF) 0</b>
----------------------------	--	---------------------------------

Procedure NA for arrival on RWF VOR/DME  
airway radials 195 CW 283.



ELEV 1073	TDZE 1073
-----------	-----------

CATEGORY	A	B	C	D
LP MDA	1500-1	427 (500-1)	1500-1¼ 427 (500-1¼)	NA
LNAV MDA	1520-1	447 (500-1)	1520-1⅜ 447 (500-1⅜)	NA
CIRCLING	1660-1 587 (600-1)	1820-1 747 (800-1)	1820-2¼ 747 (800-2¼)	NA



NC-1, 14 MAY 2026 to 11 JUN 2026

NC-1, 14 MAY 2026 to 11 JUN 2026