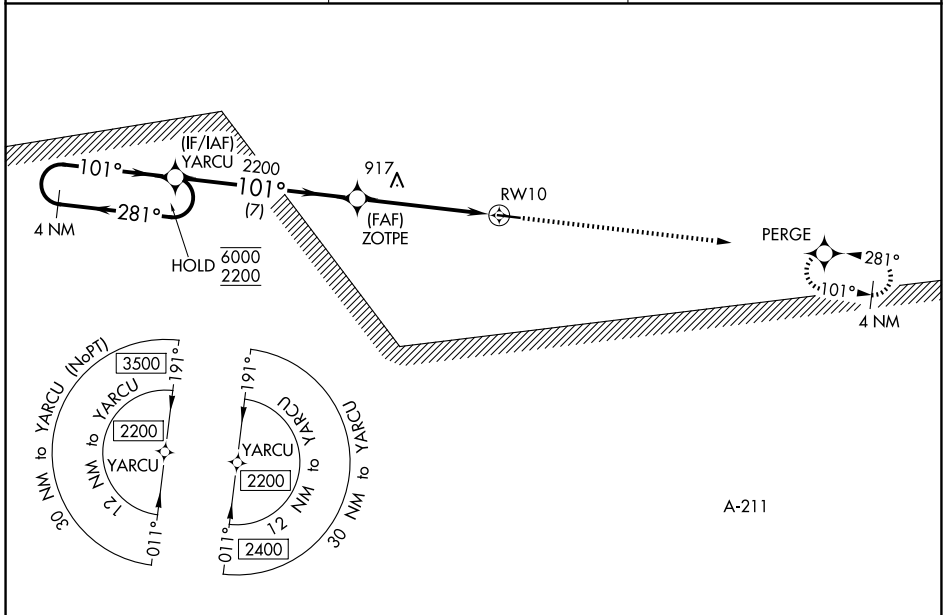


WAAS CH 53436 W10A	APP CRS 101°	Rwy Ldg 4732 TDZE 434 Apt Elev 435
--	------------------------	---

RNAV (GPS) RWY 10

CLAYTON MUNI (11A)

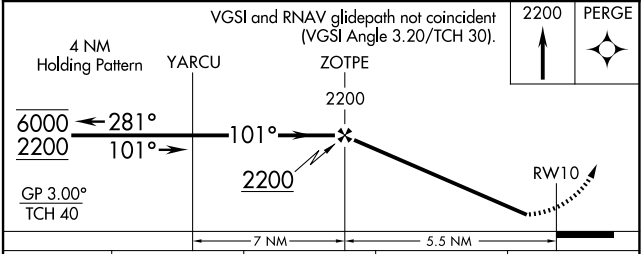
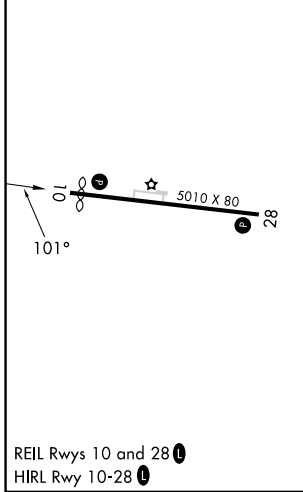
RNP APCH - GPS.		MISSED APPROACH: Climb to 2200 direct PERGE and hold.
⚠ Rwy 10 helicopter visibility reduction below 3/4 SM NA. Baro-VNAV NA. ⚠ NA Use Eufaula altimeter setting; when not received, use Troy altimeter setting.		
EUF ASOS 128,325	CAIRNS APP CON ★ 121.1 319.25	CTAF 122.90



SE-4, 14 MAY 2026 to 11 JUN 2026

SE-4, 14 MAY 2026 to 11 JUN 2026

ELEV 435	TDZE 434
----------	----------



CATEGORY	A	B	C	D
LPV DA	781-1 347 (400-1)			
LNAV/VNAV DA	1115-2½ 681 (700-2½)			
LNAV MDA	1180-1 746 (800-1)	1180-1¼ 746 (800-1¼)	1180-2 746 (800-2)	
CIRCLING	1180-1 745 (800-1)	1180-1¼ 745 (800-1¼)	1180-2¼ 745 (800-2¼)	1300-2¾ 865 (900-2¾)

REIL Rwy 10 and 28
HIRL Rwy 10-28