

APP CRS Rwy Idg **3400**
277° TDZE **1237**
 Apt Elev **1238**

RNAV (GPS) RWY 28

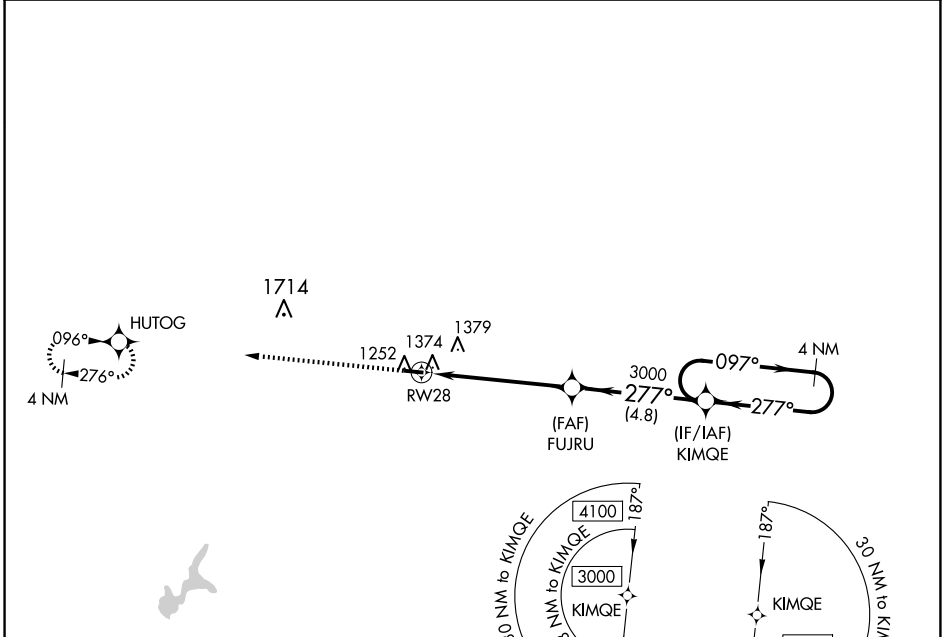
NEILLSVILLE MUNI (VIQ)

RNP APCH.

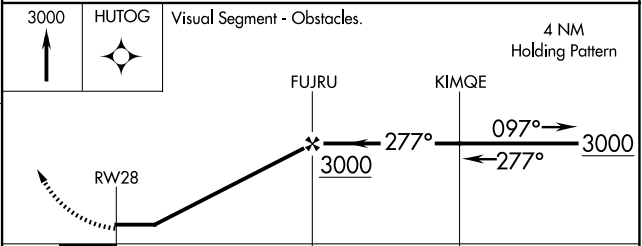
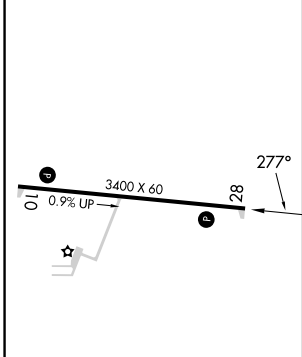
▼ **▲** NA Rwy 28 helicopter visibility reduction below 3/4 SM NA. Use Marshfield altimeter setting; when not received, use Wisconsin Rapids altimeter setting and increase all MDA 80 feet.

MISSED APPROACH:
 Climb to 3000 direct
 HUTOG and hold.

MFI ASOS 121.575	MINNEAPOLIS CENTER 124.4 317.7	UNICOM 122.8 (CTAF) 📞
----------------------------	--	--



ELEV 1238 TDZE 1237



CATEGORY	A	B	C	D
LNAV MDA	1680-1	443 (500-1)	NA	
CIRCLING	1720-1	482 (500-1)	NA	

LURL Rwy 10-28 **📞**

EC-3, 14 MAY 2026 to 11 JUN 2026

EC-3, 14 MAY 2026 to 11 JUN 2026