

WAAS CH <b>86422</b> <b>W29A</b>	APP CRS <b>290°</b>	Rwy Ldg <b>4801</b> TDZE <b>870</b> Apt Elev <b>871</b>
--	------------------------	---

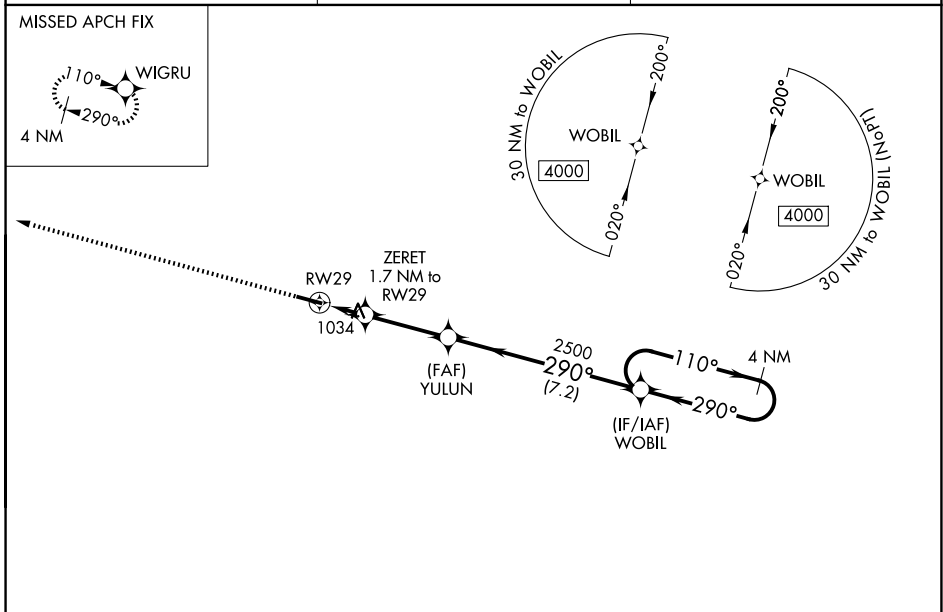
# RNAV (GPS) RWY 29

LEBANON SPRINGFIELD/GEORGE HOERTER FLD (6I2)

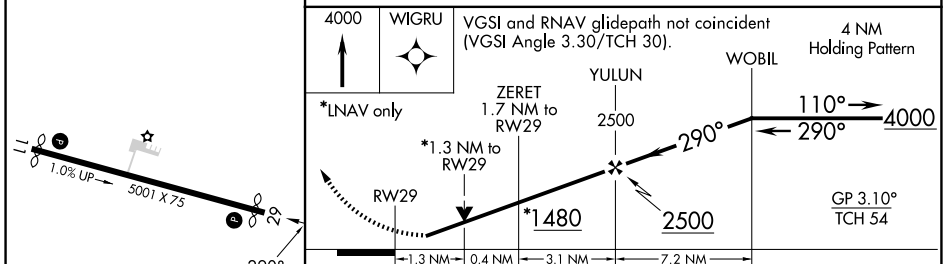
**⚠** For uncompensated Baro-VNAV systems, LNAV/VNAV NA below -16°C (4°F) or above 45°C (114°F).  
**⚠** When local altimeter setting not received, use Danville altimeter setting and increase all DA 74 feet and all MDA 80 feet; increase LPV all Cats and LNAV Cats C/D visibility 1/8 mile; LNAV/VNAV all Cats visibility 3/8 mile and Circling Cat D visibility 1/4 mile. DME/DME RNP-0.3 NA. Helicopter visibility reduction below 3/4 SM NA. Baro-VNAV and VDP NA when using Danville altimeter setting.

**MISSED APPROACH:**  
Climb to 4000 direct WIGRU and hold.

AWOS-3P <b>119.725</b>	LOUISVILLE APP CON <b>132.075 327.0</b>	UNICOM <b>122.8 (CTAF) ①</b>
---------------------------	--	---------------------------------



ELEV <b>871</b>	TDZE <b>870</b>
-----------------	-----------------



	4000	WIGRU	VGS1 and RNAV glidepath not coincident (VGS1 Angle 3.30/TCH 30).	4 NM	Holding Pattern
*LNAV only	RW29	ZERET 1.7 NM to RW29	YULUN 2500	WOBIL	4000
	*1.3 NM to RW29	*1480	2500	110° →	← 290°
	1.3 NM	0.4 NM	3.1 NM	GP 3.10° TCH 54	
CATEGORY	A	B	C	D	
LPV DA	1152-1		282 (300-1)		
LNAV/VNAV DA	1279-1¼		409 (500-1¼)		
LNAV MDA	1300-1	430 (500-1)	1300-1¼	430 (500-1¼)	
CIRCLING	1320-1 449 (500-1)	1340-1 469 (500-1)	1360-1½ 489 (500-1½)	1500-2 629 (700-2)	

MIRL Rwy 11-29 ①  
REIL Rwy 11 and 29 ①

SPRINGFIELD, KENTUCKY  
Amdt 1 31MAR16